



**giBS**

Gitarattan International Business School

Grade 'A' Accredited by NAAC

# MANAGEMENT PLACEMENT BROCHURE



**2021-22**

# From the Dean's Desk



**PRACHI JINDAL**

◆ DEAN ◆


ACADEMICS & CORPORATE AFFAIRS



21st Century businesses riding on technologies of the fourth Industrial Revolution powered by SMART technologies and automation have created a dynamic environment that significantly enhances velocity, space and networking abilities of a corporate leader. These abilities help the young leaders to create an empowered and informed environment where the work processes and systems get highly efficient and effective. To function effectively in this environment, it requires a special set of leadership abilities, competencies and skill sets. There are five crucial skill sets that are considered essential for corporate professionals: viz, descriptive, inquisitive, predictive, prescriptive and preemptive. We at GIBS, strongly believe that the student's passion is our Mission. Keeping this in mind, we tailor our pedagogy to provide experiential learning and job oriented technical skills. Eminent industry experts and an experienced faculty provide experiential teaching-learning process.

Pedagogical and skill development interventions at GIBS that provide a sound platform to the students to be Industry ready from Day-1 include Technical skills such as Advanced Excel, Managerial Skill Development, HR/Financial/Marketing Analytics and Managerial Competencies Development. With Industry Institute Partnership Cell, the GIBSian is ready to face 21st century challenges with confidence. Placements in the past have been achieved in prominent companies that include Citibank, Nestle, Amul, HUDCO, Ameriprise, IndusInd Bank, ICICI Bank, NHRCL, HDFC Bank, Planet Park, Tectura and many others.

GIBS invites your esteemed company to consider the talent pool that we have for meeting your recruitment requirements.



## About GIBS



With the motive of providing quality education, Gitarattan International Business School entered in the field of education in the year 2004. Since its inception, GIBS has reached to giant stature under the aegis of Rohini Educational Society. GIBS is affiliated to Guru Gobind Singh Indraprastha University, Delhi and is approved by All India Council for Technical Education (AICTE), Ministry of HRD, and Government of India for technical program and Bar Council of India for Law program. The Institute is conducting programme like MBA, MBA (International Business), BBA(General - 1st & 2nd shift), BALLB and BBA LLB.



## About GGSIP University



Guru Gobind Singh Indraprastha University was the first university to be established by the Government of NCT of Delhi in 1988, with the aim of facilitating and promoting studies, research, and development work in emerging areas of higher education with a special focus on professional education. The University strives to provide a market oriented professional education with a view to meet the needs of the Indian industries and the rapid change in global environment.



# Academic Advisory Board



- **Mr. R. N. Jindal**  
Chairman  
Rohini Educational Society
- **Mr. Anirudh Jindal**  
Vice Chairman  
Rohini Educational Society
- **Prof. Mohammad Akbar**  
Member  
Professor – Strategy, Indian Institute of Management Lucknow
- **Prof. J. L. Gupta**  
Member  
Formerly: VC, GGV(Central University) Bilaspur, Principal, Shri Ram College of Commerce, DU Professor-HR, MDI, Gurgaon. Professor- University of Science Malaysia, Penang.  
Professor- Dar-es-Salaam, Tanzania.
- **Prof. Harsh V. Verma**  
Member  
Professor- Marketing, FMS, DU
- **Prof. R. K. Singh**  
Member  
Professor- Delhi School of Economics; DU.
- **Prof. Sudhir K. Jain**  
Member  
Formerly: Professor & Head, Deptt. of Management Studies, IIT Delhi. VC, Shri Mata Vaishno Devi University, Katra (J&K).
- **Dr. S. P. Sharma**  
Member  
Chief Economist, PhD Chamber of Commerce and Industry New Delhi
- **Prof. B. Bhattacharya**  
Member  
Former Dean IIFT, Delhi
- **Dr. Gulshan Rai**  
Member  
Director General, CERT, Govt. of India
- **Dr. Devi Singh**  
Member  
VC, FLAME University, Pune. Former Director IIM Lucknow, Director MDI Gurgaon.
- **Dr. Irfan A Rizvi**  
Member  
Professor, IMI, Delhi
- **Prof. C. K. Jaggi**  
Member  
Professor, Department of OR, Delhi University
- **Prof. R. K. Mittal**  
Member  
VC, Chaudhary Bansi Lal University, Bhiwani. Former VC Teerthanker Mahaveer University, Moradabad
- **Member Secretary**  
Director,  
Gitarattan International Business School

# Rankings , Awards & Accreditations



# Management Courses Offered @ GIBS

<i>Courses Offered</i>	<i>Duration</i>	<i>Intake</i>
<i>MBA (1st Shift)</i>	<i>2 Years</i>	<i>120</i>
<i>MBA (2nd Shift)</i>	<i>2 Years</i>	<i>120</i>
<i>MBA-IB</i>	<i>2 Years</i>	<i>60</i>
<i>BBA (1st Shift)</i>	<i>3 Years</i>	<i>180</i>
<i>BBA (2nd Shift)</i>	<i>3 Years</i>	<i>180</i>

## Holistic Growth of the Students

GIBS International Business school believe in inculcating Generic Intellectual Business Stimulating behaviors among its students to attain intellectual, mental, physical, emotional, and social well-being in our students so that he or she is capable of facing the demands and challenges of everyday life. This becomes possible only by the motivating our students to do the following co-curricular and extra-curricular activities for their holistic growth:

- 'Skill Based Training Programs' in Marketing Analytics, HR Analytics, Finance Analytics and Advanced Excel.
- 'Problem Solving and Ideation' to enhance critical thinking abilities.
- Training in 'Design Thinking and Innovation' to foster the culture of innovation and entrepreneurship.
- The 'Leadership Training program' to turn students into effective influencers who can contribute to corporate success on a higher level.
- Regular industrial visits to learn about the industrial environment
- Training session conducted by corporate trainers and consultants to get rich experience on corporate culture and ethics.
- 'Case Analysis and Presentation' to gain business acumen.
- 'Personality Development Workshops' conducted on time management, work stress and life balance, ethics in personal and professional life etc.
- 'HR Conclave' conducted by renowned consultants to remove fear of attending interviews.
- Seminars, conference, guest lecture by eminent speakers and intellectuals at national and international level.
- Inter-college and intra-college sports tournaments and other cultural competitions to nurture the talent and social skill development of the students.

# Exclusive Programs for Students to Make Them 'Job Ready'

GIBS takes measures to sync the skills that industry is looking for and what their graduates possess. While activities like corporate lecture series, industrial visits, case studies, alumni meet, and internships take students closer to industry, we take extra measures to help students become the 'best-fit' for a sector or for domain-specific roles by focusing on the soft skills and the hard skills training. The following programs are in-built in our curriculum to sync the academics with the emerging industry requirements.

## **A. Skill Based Training Courses**

GIBS has always been focused on providing all the necessary skills for the students' long term career paths. In addition to providing world class facilities and top faculty members for the delivery of curriculum the Institute conducts skill based training programs like Marketing Analytics, HR Analytics, Finance Analytics and Advanced Excel. Our aim is to prepare students to be effective at the workplace from Day One. Students are given hands-on-exposure on the relevant software and necessary skill set for the employability in corporate.

## **B. Design Thinking and Innovative Entrepreneurship**

At GIBS students are also encouraged and inspired to pursue their entrepreneurial passions with training in Design Thinking and Innovation. Design Thinking is a human-centered and collaborative approach where inspiration for ideas comes from exploration of actual people, their needs and problems.

To foster the culture of design thinking and innovation in entrepreneurship, we have established Institute Innovation and Entrepreneurship Cell (IIC) under the Ministry of Education (MoE), Govt. Of India. Round the year IIC keeps on organizing activities like Hackathons, idea competition, mini-challenges etc. with the involvement of industries. Periodic workshops/ seminars/ interactions are also organised with entrepreneurs, investors, professionals thus creating a mentor pool for student innovators



### **C. Impactful Leadership Training**

The need for leadership development has never been more urgent. Companies of all sorts realize that to survive in today's volatile, uncertain, complex, and ambiguous environment, they need leadership skills and organizational capabilities different from those that helped them succeed in the past. It's important, therefore, that they be equipped with the relevant technical, relational, and communication skills. The Leadership Training prepares emerging executives to become more effective influencers who can contribute to corporate success on a higher level.

### **D. Personality Development**

Starting from the first semester itself personality development workshops are integrated with the course delivery as the first step towards building business leaders for tomorrow. Internationally acclaimed personality development trainers conduct these workshops for the students covering a wide span of areas like communication skills, time management, conflict management, group discussions, code of conduct & ethics in business etc.

# Infrastructure



## THE CAMPUS

To make the students follow the changing trends of latest technology, the campus is meticulously designed, and the institute provides a professionally motivating atmosphere of learning and development. The college building is spacious, well-ventilated, lighted and there are enough open spaces around the building.

GIBS offers a safe and accessible location. The Campus is just 50 meters distance from the Delhi Metro, Pitampura and Rohini East, being the nearest metro stations. DTC buses and Metro feeders have excellent frequency. Spots of entertainment like PVR Prashant Vihar, Unity One Mall, NSP Hub, Adventure Island Amusement Park and Crowne Plaza are located within the radius of 1km from the campus.



### Lecture Hall

- Spacious, fully air-conditioned with Wifi and ICT Facilities
- Well equipped with Multimedia and Audio-visual Equipments
- Tutorial and Training Rooms for Workshops



### Auditorium

- Fully air-conditioned
- Seating Capacity of 350 persons
- Hi-tech Audio and Video Facility
- Video Conferencing Facility



### The Knowledge Hub

- **Library:** Timings 8:30 am till 5:30 pm
- Centre of repository of knowledge - the library has more than 50,000 reference and text books on Management, Computer Science, Law & other subjects of interest.
- Equipped with OPAC facility for users and also houses 1000+ educational CDs and DVDs.
- Access to DELNET, AIR (online) & other online resources.
- Students Textbooks uploaded on Microsoft Teams.
- Reading Rooms inside Library
- Periodicals, Journals, Magazines & Newspapers



### IT Lab

- 4000 Sq. Ft. Computer Center with 300 Mbps Internet connectivity, having 120 nodes.
- Lenovo Think Centre i3 processor, 500 GB HD and 4 GB RAM
- 4 Dedicated Computer Labs with 60 nodes each for Teaching & Research
- Centrally air-conditioned



### Conference / Seminar Halls

- Seminar Halls with seating capacity of 120 each.
- Equipped with LCD Projector & Screen
- Fully Air-Conditioned with Video Conferencing Facility
- Installed White Marker Board with 3 ethernet points



### Other Facilities

- Indoor Sports like Billiard, TT, Chess
- MOU with Rohini Sports Complex for Badminton, Football, Cricket, Lawn Tennis & Basket Ball
- Cafeteria & Kiosk by Cafe Coffee Day
- Hygienically maintained canteen
- Separate Common Rooms for Boys & Girls
- Medical Room for First Aid
- MOU with Saroj Hospital for emergencies & Group Insurance

# Career Support

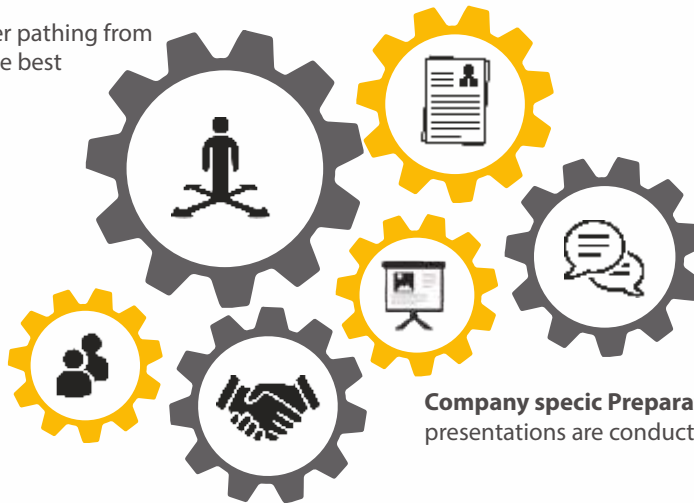
Whether you hope to join a blue chip organization or start your own business, or you are not sure which route to pursue, the IIPC at GIBS can help you on a journey of self discovery to define your options, implement a plan and enhance your employability so that you can turn your aspirations into reality.

With the objective of honing corporate and long term career success of students, the IIPC provides the students with inputs to develop their overall employability. The Institute Industry Partnership Cell (IIPC) contributes to knowledge development enabling the personality and attitude building; the essential workplace skills are reinforced through experiential work to train the students employability factors.

**Career Pathing-** Confused about career or subjects selection?

Get personalised career pathing from experts to chart out the best opportunities.

**Career Mentor** - A dedicated Success Mentor is allocated to each student so as to ensure consistent progress of the student.



**Resume Review** – Get guidance to revamp your resume on key criteria recruiters and hiring managers look for.

**Mock Interviews** – Customised to the roles you are applying for, these interviews are conducted with an objective to identify your competencies in relation to the job applied for and areas of improvement.

**Company specific Preparations** – Detailed presentations are conducted by industry mentors.

**Job placement** – Get an opportunity to get interviewed with 500+ companies through campus placement

## PLACEMENT REPORT 2020-21

The highest package of up to  
**12.4LPA.**

The average package of up to  
**4.8 LPA.**

Recruiters tied up with IIPC-GIBS  
**500+**

Students placed till March 2021  
**95%**

# Top Recruiters of GIBS

# Curriculum



## COURSE STRUCTURE – MASTER OF BUSINESS ADMINISTRATION (INTERNATIONAL BUSINESS)



Management Process & Organizational Behavior	Financial Management	Summer Training Report	International Business Strategy
Managerial Economics	Business Communication	E-Business	Cross Cultural Consumer Behaviour
Accounting for Managers	Human Resource Management	International Marketing Research	International Business Negotiations
International Business Environment	Foreign Trade Policy	Export Import Procedures and Documentation	WTO and International Business Laws
Marketing Management	India and World Economy	International Supply Chain Management and Logistics	Global Competitiveness and Strategic Alliance
Quantitative Methods for Decision Making	International Marketing	International Financial Management	Project Dissertation
IT for Managers	Advanced Marketing Management	Foreign Language 2 (German/ French/ Chinese)	
IT for Managers (Lab)	Foreign Language 1 (German/ French/ Chinese)		

## COURSE STRUCTURE – MASTER OF BUSINESS ADMINISTRATION



Management process and Organisational Behaviour	Management of Technology, Innovation and Change	Summer Training Report	Project Dissertation
Decision Sciences	Financial Management	Management of International Business	Business Intelligence and Application
Managerial Economics	Marketing Management	Information Systems Management	Strategic Management
Accounting for Management	Business Research Method	Entrepreneurship Development	Corporate Social Responsibility, Human Values & Ethics
Information Technology Management	Operations Management	Business Simulation and Games	Project Management
Business Communication	Human Resource Management	Elective 1	Elective 1
Legal Aspect of Business	E-Business	Elective 2	Elective 2
	Business Analytics	Elective 3	Elective 3
Information Technology Management Lab		Elective 4	
Managerial Skills Development		Elective 5	

# Curriculum



## ELECTIVES FOR MBA – MARKETING, FINANCE, HRM, IT, IB, Operations & Analytics

SEMESTER 3

SEMESTER 3

SEMESTER 4

SEMESTER 4

<p>Electives – Marketing</p> <ul style="list-style-type: none"> <li>Consumer Behavior</li> <li>Sales and Distribution Management</li> <li>International Marketing</li> <li>Services Marketing</li> <li>Customer Relationship Management</li> </ul>	<p>Electives – IT</p> <ul style="list-style-type: none"> <li>System Analysis and Design</li> <li>Enterprise Systems</li> <li>Network Application and Management</li> <li>Database Management Systems</li> <li>Information Security Management</li> <li>Database Management System (Lab)</li> </ul>	<p>Electives – Marketing</p> <ul style="list-style-type: none"> <li>Retail Management</li> <li>Advertising &amp; Brand Management</li> <li>Internet Marketing</li> <li>Business Marketing</li> </ul>	<p>Electives – IT</p> <ul style="list-style-type: none"> <li>Digitalization and E-Governance</li> <li>Software Project Management</li> <li>Web Technologies</li> <li>Knowledge Management</li> <li>Web Technologies (Lab)</li> </ul>
<p>Electives – Finance</p> <ul style="list-style-type: none"> <li>International Financial Management</li> <li>Financial Market and Institutions</li> <li>Security Analysis &amp; Investment Management</li> <li>Corporate Tax Planning</li> <li>Financial Econometric</li> </ul>	<p>Electives – IB</p> <ul style="list-style-type: none"> <li>International Business Environment</li> <li>Export, Import Policies, Procedures and Documentation</li> <li>WTO and Intellectual Property Rights</li> <li>International Economics</li> <li>International Business Negotiation</li> </ul>	<p>Electives – Finance</p> <ul style="list-style-type: none"> <li>Strategic Financial Management</li> <li>Mergers, Acquisition and Corporate Restructuring</li> <li>Financial Derivatives</li> <li>Behaviour Finance</li> </ul>	<p>Electives – IB</p> <ul style="list-style-type: none"> <li>Global Competitiveness and Strategic Alliance</li> <li>Supply Chain Management for International Business</li> <li>Managing Diversity</li> <li>Global Strategic Management</li> </ul>
<p>Electives – HRM</p> <ul style="list-style-type: none"> <li>Compensation Management</li> <li>Industrial Relations and Labor Laws</li> <li>Training and Development</li> <li>Performance Management</li> <li>Talent Management</li> </ul>	<p>Electives – Operations &amp; Analytics</p> <ul style="list-style-type: none"> <li>Enterprise &amp; System</li> <li>Operation Strategy</li> <li>Logistic and Supply Chain Management</li> <li>Predictive Analytics &amp; Big Data</li> </ul>	<p>Electives – HRM</p> <ul style="list-style-type: none"> <li>Strategic Human Resource Management</li> <li>Organizational Development</li> <li>Team Building</li> <li>Behaviour Testing and Counselling</li> </ul>	

# Curriculum



## COURSE STRUCTURE – BACHELOR OF BUSINESS ADMINISTRATION

**SEMESTER 1**

**SEMESTER 2**

**SEMESTER 3**

Management Process and Organizational Behaviour	Cost Accounting	Business Laws
Business Mathematics	Decision Techniques for Business	Marketing Management
Financial Accounting and Analysis	Business Environment	Human Resource Management
Business Economics	E- Commerce	Management Accounting
IT Applications in Business	Business Communication	Production and Operations Management
IT Applications in Business-Lab	E- Commerce Lab	Business Research Methodology
Entrepreneurial Mindset	Minor Project- I	Business Research Methodology Lab
	MOOC	NSS/NCC/NSO/others as notified by the university
		Environmental Studies

**SEMESTER 4**

**SEMESTER 5**

**SEMESTER 6**

Business Analytics	Goods and Services Tax	Project Management
Financial Management	Business Policy and Strategy	Digital Marketing
Corporate Governance, Ethics & Social Responsibility of Business	Information Systems Management	ELECTIVES 3 <ul style="list-style-type: none"> <li>· HR Analytics</li> <li>· Advertising and Sales Promotion</li> <li>· Investment Analysis and Portfolio Management</li> </ul>
Income Tax Law and Practice	Information Systems Management Lab	Entrepreneurship Development
MOOC	ELECTIVES 2 <ul style="list-style-type: none"> <li>· Marketing Analytics</li> <li>· Performance Management</li> <li>· Financial Modeling</li> </ul>	Major Project
ELECTIVES 1 <ul style="list-style-type: none"> <li>· Training and Development</li> <li>· Sales Management</li> </ul> Financial Markets and Institutions	Summer Training Report	
Minor Project - II		

\* Syllabus w.e.f. from Academic Session 2021- 2022. Admitted batch has been changed as per NEP 2021.

# MBA STUDENTS PROFILES



## SAHIL SHARMA

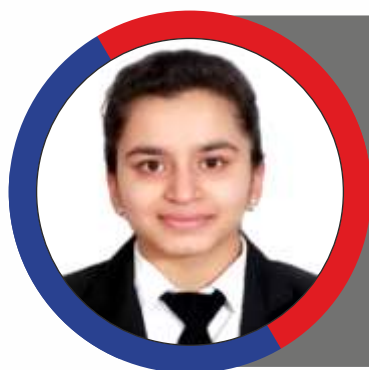
DOB: 13.03.1998  
PERCENTAGE OF  
Class 10<sup>th</sup> - 67%  
Class 12<sup>th</sup> - 67%  
Graduation - 71%

### **AREAS OF INTEREST:**

Finance

### **INTERNSHIPS:**

Bridge Group Solutions



## AKSHITA MISHRA

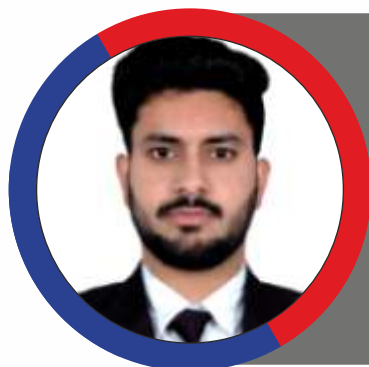
DOB: 09.08.1999  
PERCENTAGE OF  
Class 10<sup>th</sup> - 77.9%  
Class 12<sup>th</sup> - 69.2%  
Graduation - 86%

### **AREAS OF INTEREST:**

Finance

### **INTERNSHIPS:**

Agricultural Insurance Corporation of India (AIC), Hope NGO & BLITZJOBS



## ANUBHAV VIDYARTHEE

DOB: 13.04.1998  
PERCENTAGE OF  
Class 10<sup>th</sup> - 67.8 CGPA  
Class 12<sup>th</sup> - 81.5%  
Graduation - 7.091 CGPA

### **AREAS OF INTEREST:**

Finance

### **INTERNSHIPS:**

Cinesonic Audio Visual Pvt. Ltd.



## ASHI GOEL

DOB: 3.12.1998  
PERCENTAGE OF  
Class 10<sup>th</sup> - 7.4 CGPA  
Class 12<sup>th</sup> - 40.6%  
Graduation - 55%

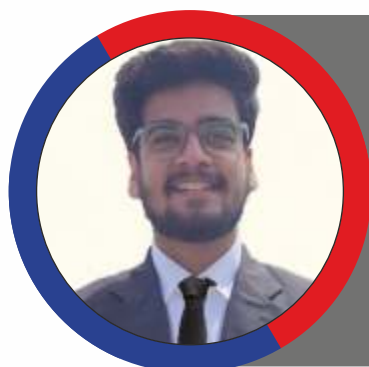
### **AREAS OF INTEREST:**

Finance

### **INTERNSHIPS:**

Learnovate e-commerce

# MBA STUDENTS PROFILES



## AYUSH NAUTIYAL

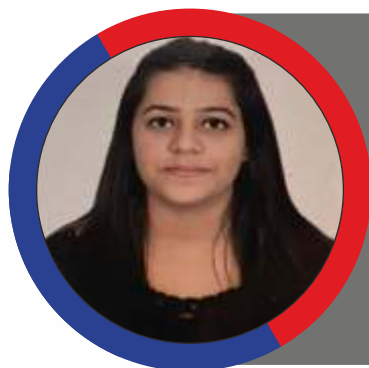
DOB: 17.06.1997  
PERCENTAGE OF  
Class 10<sup>th</sup> - 7 CGPA  
Class 12<sup>th</sup> - 70%  
Graduation - 7.46 CGPA

### AREAS OF INTEREST:

Finance

### INTERNSHIPS:

Sharekhan



## BHAVYA BHANDARI

DOB: 09.08.1999  
PERCENTAGE OF  
Class 10<sup>th</sup> - 6 CGPA  
Class 12<sup>th</sup> - 65%  
Graduation - 66%

### AREAS OF INTEREST:

Finance

### INTERNSHIPS:

Areness



## VASHU DEV

DOB: 02.07.1998  
PERCENTAGE OF  
Class 10<sup>th</sup> - 7.2 CGPA  
Class 12<sup>th</sup> - 54.6%  
Graduation - 57%

### AREAS OF INTEREST:

Finance

### INTERNSHIPS:

Goenka Farms Ltd.



## RAHUL SHARMA

DOB: 14.10.1998  
PERCENTAGE OF  
Class 10<sup>th</sup> - 7.8 CGPA  
Class 12<sup>th</sup> - 60%  
Graduation - 7.54 CGPA

### AREAS OF INTEREST:

Finance

### INTERNSHIPS:

M.K Enterprises

# MBA STUDENTS PROFILES



## DRISHTI ARORA

DOB: 06.07.1999  
PERCENTAGE OF  
Class 10<sup>th</sup> - 7.4 CGPA  
Class 12<sup>th</sup> - 83.5%  
Graduation - 78.4%

### **AREAS OF INTEREST:**

Finance

### **INTERNSHIPS:**

Silverlabs, iFortis Corporate



## HITESH BHATT

DOB: 13.07.1999  
PERCENTAGE OF  
Class 10<sup>th</sup> - 68%  
Class 12<sup>th</sup> - 56%  
Graduation - 62%

### **AREAS OF INTEREST:**

Finance

### **INTERNSHIPS:**

Times of India



## ISHITA

DOB: 04.12.1997  
PERCENTAGE OF  
Class 10<sup>th</sup> - 70%  
Class 12<sup>th</sup> - 63%  
Graduation - 68%

### **AREAS OF INTEREST:**

Finance

### **INTERNSHIPS:**

Blitz Jobs, SMC Global Securities  
Publiclimited



## K.CHANDANA

DOB: 18.12.1999  
PERCENTAGE OF  
Class 10<sup>th</sup> - 75%  
Class 12<sup>th</sup> - 69%  
Graduation - 61%

### **AREAS OF INTEREST:**

Finance

### **INTERNSHIPS:**

Housing and Urban Development  
Corporation Limited (HUDCO)

# MBA STUDENTS PROFILES



## **KIRTI BATRA**

DOB: 24.09.1999  
PERCENTAGE OF  
Class 10<sup>th</sup> - 9.6 CGPA  
Class 12<sup>th</sup> - 67.2%  
Graduation - 7.63 CGPA

### **AREAS OF INTEREST:**

Finance

### **INTERNSHIPS:**

Indus Tyres and Wheels



## **KULDEEP SINGH**

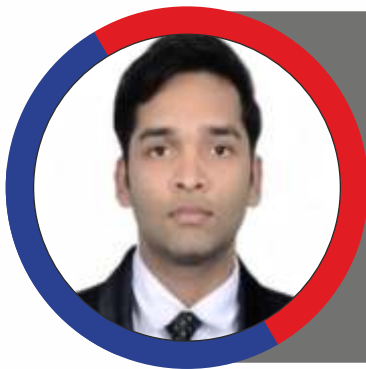
DOB: 30.09.1999  
PERCENTAGE OF  
Class 10<sup>th</sup> - 57%  
Class 12<sup>th</sup> - 64.2%  
Graduation - 74%

### **AREAS OF INTEREST:**

Finance

### **INTERNSHIPS:**

Puma



## **MANAN JAIN**

DOB: 26.09.2000  
PERCENTAGE OF  
Class 10<sup>th</sup> - 6.2 CGPA  
Class 12<sup>th</sup> - 53%  
Graduation - 67%

### **AREAS OF INTEREST:**

Finance

### **INTERNSHIPS:**

National Thermal Power Corporation (NTPC), Amul



## **MANSI DAWAR**

DOB:  
PERCENTAGE OF  
Class 10<sup>th</sup> - 8.8 CGPA  
Class 12<sup>th</sup> - 85%  
Graduation - 86.7%

### **AREAS OF INTEREST:**

Finance

### **INTERNSHIPS:**

Paytm Payments Bank Pvt. Ltd.  
Sankalp NGO.

# MBA STUDENTS PROFILES



## **HARSHIT KHULLAR**

DOB: 21.09.1999  
PERCENTAGE OF  
Class 10<sup>th</sup> - 7.6 CGPA  
Class 12<sup>th</sup> - 72.6%  
Graduation - 77%

### **AREAS OF INTEREST:**

Finance

### **INTERNSHIPS:**

AVKG and Associates  
VSD and Associates



## **PARUL CHHABRA**

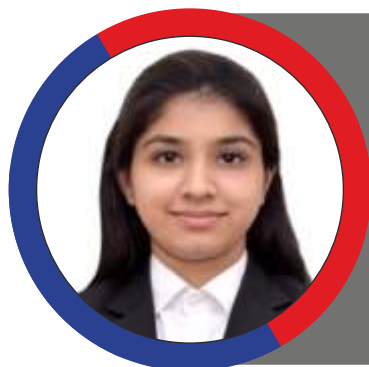
DOB: 22.12.1997  
PERCENTAGE OF  
Class 10<sup>th</sup> - 7.4 CGPA  
Class 12<sup>th</sup> - 65.2%  
Graduation - 79.7%

### **AREAS OF INTEREST:**

Finance

### **INTERNSHIPS:**

Rebel Edutech Rising Pvt. Ltd.  
Chatterbox Technologies Pvt. Ltd.  
SONA BLW Precision Forgings Ltd



## **GURPREET KAUR**

DOB: 28.02.1998  
PERCENTAGE OF  
Class 10<sup>th</sup> - 8 CGPA  
Class 12<sup>th</sup> - 64.8%  
Graduation - 60%

### **AREAS OF INTEREST:**

Finance

### **INTERNSHIPS:**

IB Marketing



## **NITISH MAHAJAN**

DOB: 05.04.1999  
PERCENTAGE OF  
Class 10<sup>th</sup> - 60.8%  
Class 12<sup>th</sup> - 83%  
Graduation - 77.7%

### **AREAS OF INTEREST:**

Finance

### **INTERNSHIPS:**

Edelweiss Broking Limited, Hungama Digital  
Media Entertainment, Hinduja Tech Limited-  
Hinduja Group, One Plus, Rhinos Wellness  
Sharekhan BNP Paribas, Paytm

# MBA STUDENTS PROFILES



## **PRAGATI CHAUDHARY**

DOB: 21.10.1996  
PERCENTAGE OF  
Class 10<sup>th</sup>- 78%  
Class 12<sup>th</sup>- 79%  
Graduation- 71.5%

### **AREAS OF INTEREST:**

Finance

### **INTERNSHIPS:**

Creative Merchants, Insplore, Shiksha



## **RIA BHATIA**

DOB: 24.06.1999  
PERCENTAGE OF  
Class 10<sup>th</sup>- 79.8%  
Class 12<sup>th</sup>- 80%  
Graduation- 68.5%

### **AREAS OF INTEREST:**

Finance

### **INTERNSHIPS:**

Learnovate ecommerce



## **SACHIN PATHAK**

DOB: 22.04.1998  
PERCENTAGE OF  
Class 10<sup>th</sup>- 5.8 CGPA  
Class 12<sup>th</sup>- 78.25%  
Graduation- 6.87 CGPA

### **AREAS OF INTEREST:**

Finance

### **INTERNSHIPS:**

D.S Nagpal & Associate



## **UDAY SHARMA**

DOB: 23.02.1999  
PERCENTAGE OF  
Class 10<sup>th</sup>- 8.8 CGPA  
Class 12<sup>th</sup>- 69.75%  
Graduation- 62%

### **AREAS OF INTEREST:**

Finance

### **INTERNSHIPS:**

ICFM, Learnovate Ecommerce,  
Acuevers

# MBA STUDENTS PROFILES



## **VIDHI GUPTA**

DOB: 07.06.1999  
PERCENTAGE OF  
Class 10<sup>th</sup> - 91.2%  
Class 12<sup>th</sup> - 88%  
Graduation - 67.5%

### **AREAS OF INTEREST:**

Finance

### **INTERNSHIPS:**

IB Marketing



## **YASHIKA MITTAL**

DOB: 06.05.1999  
PERCENTAGE OF  
Class 10<sup>th</sup> - 73%  
Class 12<sup>th</sup> - 76%  
Graduation - 65%

### **AREAS OF INTEREST:**

Finance

### **INTERNSHIPS:**

HP Gas Agency, IB Marketing

# MBA STUDENTS PROFILES



## **SIMRANJEET KAUR**

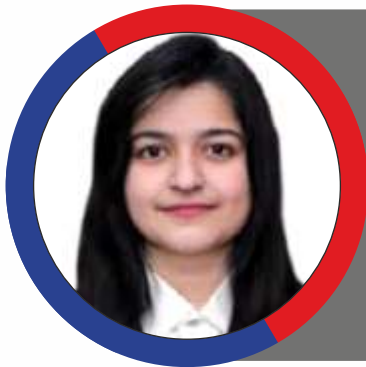
DOB: 23.02.1996  
PERCENTAGE OF  
Class 10<sup>th</sup>- 6.2 CGPA  
Class 12<sup>th</sup>- 80%  
Graduation- 57%

### **AREAS OF INTEREST:**

HR

### **INTERNSHIPS:**

Eminence Solutions



## **ADITI ARORA**

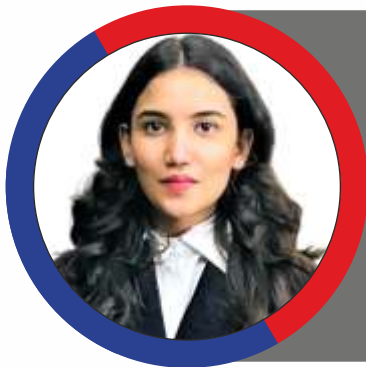
DOB: 13.01.1999  
PERCENTAGE OF  
Class 10<sup>th</sup>- 77.9%  
Class 12<sup>th</sup>-77.4%  
Graduation- 86.3%

### **AREAS OF INTEREST:**

HR

### **INTERNSHIPS:**

Normet India Private Limited



## **AMBIKA GAUR**

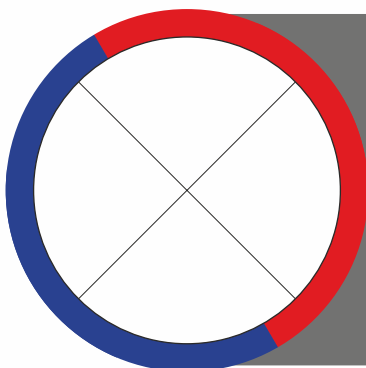
DOB: 20.12.1999  
PERCENTAGE OF  
Class 10<sup>th</sup>- 50%  
Class 12<sup>th</sup>- 75%  
Graduation- 70%

### **AREAS OF INTEREST:**

HR

### **INTERNSHIPS:**

Max Life Insurance



## **ANCHAL KUMAR**

DOB: 11.01.1999  
PERCENTAGE OF  
Class 10<sup>th</sup>- 7 CGPA  
Class 12<sup>th</sup>- 65.4%  
Graduation- 6.67 CGPA

### **AREAS OF INTEREST:**

HR

### **INTERNSHIPS:**

Peacock Solar, India Heavy Cargo Movers

# MBA STUDENTS PROFILES



## DEEPIKA CHOURASIYA

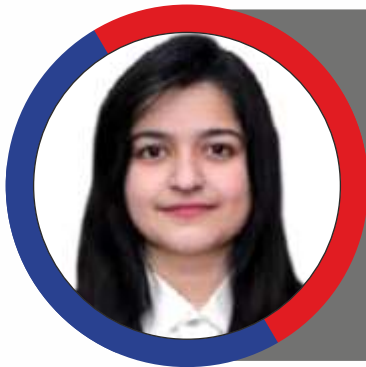
DOB: 08.02.2000  
PERCENTAGE OF  
Class 10<sup>th</sup>- 60%  
Class 12<sup>th</sup>- 55%  
Graduation- 60%

### AREAS OF INTEREST:

HR

### INTERNSHIPS:

Punjab Kesari Group, Times Of India,  
iFortis Corporate



## HIMANSHI

DOB: 03.10.1999  
PERCENTAGE OF  
Class 10<sup>th</sup>- 84%  
Class 12<sup>th</sup>- 78%  
Graduation- 74%

### AREAS OF INTEREST:

HR

### INTERNSHIPS:

Peacock Solar, Padh High, Gursidak  
Foundation, BOB Financial Solutions  
Limited



## KUSUM

DOB: 21.03.1999  
PERCENTAGE OF  
Class 10<sup>th</sup>- 74%  
Class 12<sup>th</sup>- 65%  
Graduation- 55%

### AREAS OF INTEREST:

HR

### INTERNSHIPS:

Entrepreneur Support Solution, Krishna Law  
House, iFortis Corporate



## MANVI GARG

DOB: 12.08.2000  
PERCENTAGE OF  
Class 10<sup>th</sup>- 68.4%  
Class 12<sup>th</sup>- 60%  
Graduation- 78.28%

### AREAS OF INTEREST:

HR

### INTERNSHIPS:

Peacock Solar, Allsoft & Solutions & Services  
Pvt Ltd

# MBA STUDENTS PROFILES



## **SANJANA ARORA**

DOB: 09.09.1997  
PERCENTAGE OF  
Class 10<sup>th</sup>- 90%  
Class 12<sup>th</sup>- 84%  
Graduation- 74%

### **AREAS OF INTEREST:**

HR

### **INTERNSHIPS:**

Haldirams Snacks Pvt. Ltd., TuteDude , Vita Milk Plant, TFS Corporate Solutions Ltd iFortis Corporate, Peacock Solar



## **NAROTTAM**

DOB: 01.01.1996  
PERCENTAGE OF  
Class 10<sup>th</sup>- 58.4%  
Class 12<sup>th</sup>- 78.4%  
Graduation- 6 CGPA%

### **AREAS OF INTEREST:**

HR

### **INTERNSHIPS:**

Infosys



## **NEHA DADWAL**

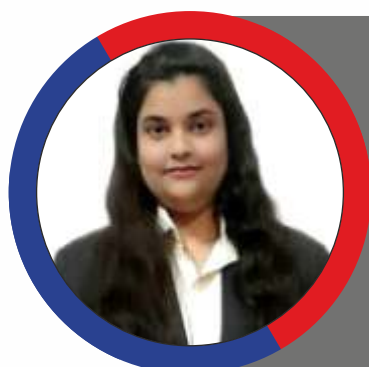
DOB: 15.08.1998  
PERCENTAGE OF  
Class 10<sup>th</sup>- 7.2 CGPA  
Class 12<sup>th</sup>- 55.8%  
Graduation- 73%

### **AREAS OF INTEREST:**

HR

### **INTERNSHIPS:**

Max Healthcare Hospital, National High Speed Rail Corporation Limited



## **NISHTHA BHARDWAJ**

DOB: 23.08.1996  
PERCENTAGE OF  
Class 10<sup>th</sup>- 6.8 CGPA  
Class 12<sup>th</sup>- 44%  
Graduation- 52.8%

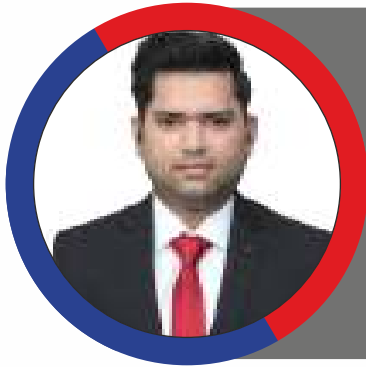
### **AREAS OF INTEREST:**

HR

### **INTERNSHIPS:**

Tutoraj, Navodya Society of Social Welfare, CS Advisor

# MBA STUDENTS PROFILES



## **JALESHWAR NATH TIWARI**

DOB: 25.11.1992  
PERCENTAGE OF  
Class 10<sup>th</sup>- 67.3%  
Class 12<sup>th</sup>- 61%  
Graduation- 79%

### **AREAS OF INTEREST:**

HR

### **INTERNSHIPS:**

Marketing Strategies of Delco International



## **VANSHIKA**

DOB: 29.01.1999  
PERCENTAGE OF  
Class 10<sup>th</sup>- 76%  
Class 12<sup>th</sup>- 73%  
Graduation- 63%

### **AREAS OF INTEREST:**

HR

### **INTERNSHIPS:**

SAIL



## **SACHIN YADAV**

DOB: 15.06.1998  
PERCENTAGE OF  
Class 10<sup>th</sup>- 7.8 CGPA  
Class 12<sup>th</sup>- 65.8%  
Graduation- 57.1%

### **AREAS OF INTEREST:**

HR

### **INTERNSHIPS:**

SGM Paper Products



## **SAKSHI UPADHYAY**

DOB: 24.10.1999  
PERCENTAGE OF  
Class 10<sup>th</sup>- 85.5%  
Class 12<sup>th</sup>- 64.2%  
Graduation- 79.6%

### **AREAS OF INTEREST:**

HR

### **INTERNSHIPS:**

Hiring Consulting

# MBA STUDENTS PROFILES



## **RHYTHM GUPTA**

DOB: 01.11.1999  
PERCENTAGE OF  
Class 10<sup>th</sup>- 62.6%  
Class 12<sup>th</sup>- 53.7%  
Graduation- 62%

### **AREAS OF INTEREST:**

HR

### **INTERNSHIPS:**

Peacock Solar,  
IFORTIS CORPORATE



## **SHALINI**

DOB: 30.06.1995  
PERCENTAGE OF  
Class 10<sup>th</sup>- 7.4CGPA  
Class 12<sup>th</sup>- 71.2%  
Graduation- 56.44%

### **AREAS OF INTEREST:**

HR

### **INTERNSHIPS:**

Peacock Solar, CSA Advisor, Tutoraj,  
Shri Navodaya Society of Social Welfare



## **SHIVANSHU SHARMA**

DOB: 28.06.1999  
PERCENTAGE OF  
Class 10<sup>th</sup>- 6.4 CGPA  
Class 12<sup>th</sup>- 52%  
Graduation- 6.5 CGPA

### **AREAS OF INTEREST:**

HR

### **INTERNSHIPS:**

iFortis Worldwide



## **SHRUTI GUPTA**

DOB: 22.07.2000  
PERCENTAGE OF  
Class 10<sup>th</sup>- 68.4%  
Class 12<sup>th</sup>- 76.6%  
Graduation- 61%

### **AREAS OF INTEREST:**

HR

### **INTERNSHIPS:**

Peacock Solar,  
Inception Wave

# MBA STUDENTS PROFILES



## TANYA TALWAR

DOB: 13.03.1999  
PERCENTAGE OF  
Class 10<sup>th</sup>- 78.85%  
Class 12<sup>th</sup>- 71.8%  
Graduation- 80.35%

### AREAS OF INTEREST:

HR

### INTERNSHIPS:

Hiring Lems Consulting



## VASUDHA SINGH

DOB: 04.05.1999  
PERCENTAGE OF  
Class 10<sup>th</sup>- 7.80 CGPA  
Class 12<sup>th</sup>- 61.5%  
Graduation- 62.60%

### AREAS OF INTEREST:

HR

### INTERNSHIPS:

Strega Modular Furniture, Futurera,  
Peacock Solar



## VEENA RAWAT

DOB: 10.10.1999  
PERCENTAGE OF  
Class 10<sup>th</sup>- 9 CGPA  
Class 12<sup>th</sup>- 89.7%  
Graduation- 61.8%

### AREAS OF INTEREST:

HR

### INTERNSHIPS:

Peacock Solar

# MBA STUDENTS PROFILES



## **ANOUSHKA GOEL**

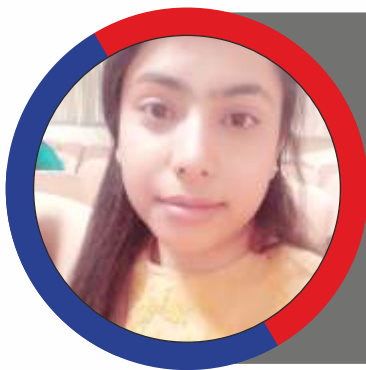
DOB: 09.08.1999  
PERCENTAGE OF  
Class 10<sup>th</sup>- 3.32 GPA  
Class 12<sup>th</sup>- 3.5 GPA  
Graduation- 3.7 GPA

### **AREAS OF INTEREST:**

IB

### **INTERNSHIPS:**

Calpsu, Juv Technologies Pvt Ltd.,  
Bunker's Study Point



## **ANUSHKA KATARIA**

DOB: 12.11.1999  
PERCENTAGE OF  
Class 10<sup>th</sup>- 6.6 CGPA  
Class 12<sup>th</sup>- 73%  
Graduation- 6.53 CGPA

### **AREAS OF INTEREST:**

IB

### **INTERNSHIPS:**

Peacock Solar



## **CHANDAN JANGID**

DOB:  
PERCENTAGE OF  
Class 10<sup>th</sup>- 70%  
Class 12<sup>th</sup>- 55.6%  
Graduation- 70.3%

### **AREAS OF INTEREST:**

IB

### **INTERNSHIPS:**

ENCO Engineers Combine Pvt Ltd.



## **PRIYANKA KASHYAP**

DOB: 06.05.1998  
PERCENTAGE OF  
Class 10<sup>th</sup>- 57%  
Class 12<sup>th</sup>- 59.25%  
Graduation- 71%

### **AREAS OF INTEREST:**

IB

### **INTERNSHIPS:**

VQMS Pvt.Ltd, Digifuse

# MBA STUDENTS PROFILES



## **RIYA**

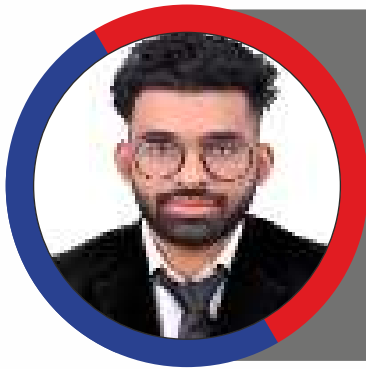
DOB: 17.11.1998  
PERCENTAGE OF  
Class 10<sup>th</sup>- 7.4 CGPA  
Class 12<sup>th</sup>- 68.75%  
Graduation- 75%

### **AREAS OF INTEREST:**

IB

### **INTERNSHIPS:**

Home Class Company



## **VAIBHAV SHARMA**

DOB: 16.05.1999  
PERCENTAGE OF  
Class 10<sup>th</sup>- 82%  
Class 12<sup>th</sup>- 78%  
Graduation- 72%

### **AREAS OF INTEREST:**

IB

### **INTERNSHIPS:**

Vaishnavi Enterprises,  
Arise India Footcare



## **RISHABH KUMAR SHARMA**

DOB: 08.02.2000  
PERCENTAGE OF  
Class 10<sup>th</sup>- 60%  
Class 12<sup>th</sup>- 67%  
Graduation- 77.77%

### **AREAS OF INTEREST:**

IB

### **INTERNSHIPS:**

Times Of India



## **AAYUSH DHAMIJA**

DOB: 26.12.1998  
PERCENTAGE OF  
Class 10<sup>th</sup>- 72%  
Class 12<sup>th</sup>- 60%  
Graduation- 79%

### **AREAS OF INTEREST:**

IB

### **INTERNSHIPS:**

Om Logistics,  
Om Translogistics

# MBA STUDENTS PROFILES



## **SALONI SIKKA**

DOB: 07.06.1999  
PERCENTAGE OF  
Class 10<sup>th</sup>- 60%  
Class 12<sup>th</sup>- 60%  
Graduation- 73%

### **AREAS OF INTEREST:**

IB

### **INTERNSHIPS:**

Home Class Company



## **SNEHA JAIN**

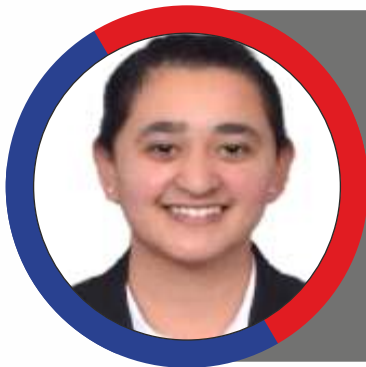
DOB: 05.02.2000  
PERCENTAGE OF  
Class 10<sup>th</sup>- 6.8 CGPA  
Class 12<sup>th</sup>- 71.4%  
Graduation- 7.05 CGPA

### **AREAS OF INTEREST:**

IB

### **INTERNSHIPS:**

Relaxo Footwears Ltd.



## **TARANPREET KAUR**

DOB: 04.10.1999  
PERCENTAGE OF  
Class 10<sup>th</sup>- 51.3%  
Class 12<sup>th</sup>- 58.67%  
Graduation- 78.9%

### **AREAS OF INTEREST:**

IB

### **INTERNSHIPS:**

Samagra Foundation,  
Wonder Wardrobes

# MBA STUDENTS PROFILES



## SHIVAM AGGARWAL

DOB: 23.02.1999  
PERCENTAGE OF  
Class 10<sup>th</sup>- 58.9%  
Class 12<sup>th</sup>- 68%  
Graduation- 65.9%

### AREAS OF INTEREST:

Marketing

### INTERNSHIPS:

Business Development Intern



## ADITYA PUNDIR

DOB: 6.02.1997  
PERCENTAGE OF  
Class 10<sup>th</sup>- 7.4 CGPA  
Class 12<sup>th</sup>- 63%  
Graduation- 82%

### AREAS OF INTEREST:

Marketing

### INTERNSHIPS:

Rizzle, iFortis Coporate



## AMANPREET SINGH

DOB: 31.12.1998  
PERCENTAGE OF  
Class 10<sup>th</sup>- 6.4 CGPA  
Class 12<sup>th</sup>- 56.2%  
Graduation- 62.9%

### AREAS OF INTEREST:

Marketing

### INTERNSHIPS:

Airtel, iFortis Worldwide



## ANSHUL SHARMA

DOB: 25.02.1999  
PERCENTAGE OF  
Class 10<sup>th</sup>- 43.7%  
Class 12<sup>th</sup>- 52%  
Graduation- 6.17 CGPA

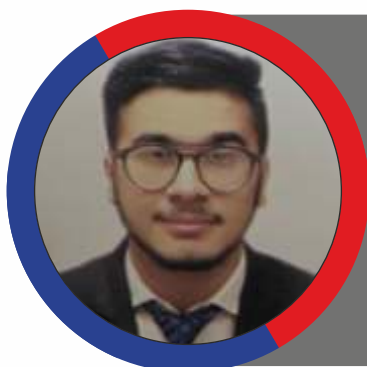
### AREAS OF INTEREST:

Marketing

### INTERNSHIPS:

Mother Dairy Fruit & Vegetables Pvt. Ltd

# MBA STUDENTS PROFILES



## ARUN AHUJA

DOB: 23.08.2000  
PERCENTAGE OF  
Class 10<sup>th</sup>- 6.4 CGPA  
Class 12<sup>th</sup>- 61%  
Graduation- 7.36 CGPA

### AREAS OF INTEREST:

Marketing

### INTERNSHIPS:

TAFE Ltd.,  
TATA Power Solar System Limited



## ASHUTOSH GOUR

DOB: 14.01.1999  
PERCENTAGE OF  
Class 10<sup>th</sup>- 7.6 CGPA  
Class 12<sup>th</sup>- 67.6%  
Graduation- 62.5%

### AREAS OF INTEREST:

Marketing

### INTERNSHIPS:

Salubrious Services PVT. Ltd.



## AVI KAPOOR

DOB: 27.12.1998  
PERCENTAGE OF  
Class 10<sup>th</sup>- 7.4 CGPA  
Class 12<sup>th</sup>- 75%  
Graduation- 85%

### AREAS OF INTEREST:

Marketing

### INTERNSHIPS:

Relaxo



## AYUSH SHARMA

DOB: 05.09.1999  
PERCENTAGE OF  
Class 10<sup>th</sup>- 7.2 CGPA  
Class 12<sup>th</sup>- 49.2%  
Graduation- 62%

### AREAS OF INTEREST:

Marketing

### INTERNSHIPS:

Insplore Consultants,  
Youth Empowerment Foundation

# MBA STUDENTS PROFILES



## BALRAM SINGH

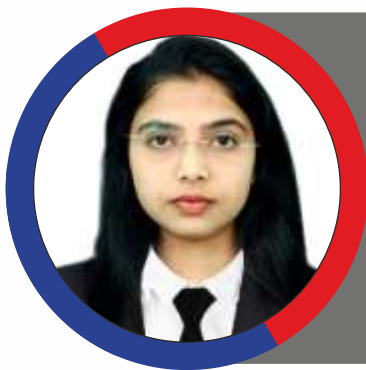
DOB: 02.11.1999  
PERCENTAGE OF  
Class 10<sup>th</sup>- 4.8 CGPA  
Class 12<sup>th</sup>- 53.4%  
Graduation- 5.7 CGPA

### AREAS OF INTEREST:

Marketing

### INTERNSHIPS:

Visudh Ajivam Pvt Ltd



## ADITI GUPTA

DOB: 24.7.1998  
PERCENTAGE OF  
Class 10<sup>th</sup>- 77.9%  
Class 12<sup>th</sup>- 89.2%  
Graduation- 60%

### AREAS OF INTEREST:

Marketing

### INTERNSHIPS:

Creative merchants, Six Red Marbles,  
Comit Aid, Three elements, Clickbic,  
Chinh India



## MUSKAAN BHATT

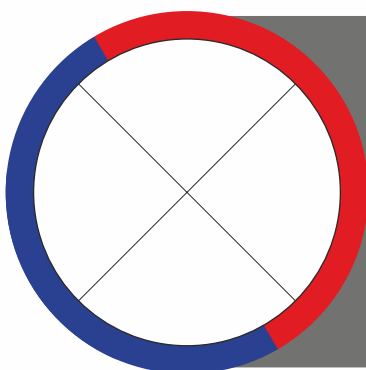
DOB: 10.12.1998  
PERCENTAGE OF  
Class 10<sup>th</sup>- 87%  
Class 12<sup>th</sup>- 84%  
Graduation- 55%

### AREAS OF INTEREST:

Marketing

### INTERNSHIPS:

Rizzle India, Consultmate, The  
Sparks Foundation, The Keyn,  
Service4Startup, Iquanta, Navjyoti  
India Foundation, Accussure



## KUMAR SHIVAM

DOB: 01.02.1999  
PERCENTAGE OF  
Class 10<sup>th</sup>- 57%  
Class 12<sup>th</sup>- 60.4%  
Graduation- 54%

### AREAS OF INTEREST:

Marketing

### INTERNSHIPS:

Tata Motors Ltd.

# MBA STUDENTS PROFILES



## **DISHA SHARMA**

DOB: 20.08.1996  
PERCENTAGE OF  
Class 10<sup>th</sup>- 9.4 CGPA  
Class 12<sup>th</sup>- 71%  
Graduation- 72%

### **AREAS OF INTEREST:**

Marketing

### **INTERNSHIPS:**

Quantumhunts, Tutoraj



## **KUNAL ARORA**

DOB: 06.03.1998  
PERCENTAGE OF  
Class 10<sup>th</sup>- 64.6%  
Class 12<sup>th</sup>- 68%  
Graduation- 52.8%

### **AREAS OF INTEREST:**

Marketing

### **INTERNSHIPS:**

IB Marketing



## **MANAV SHARMA**

DOB: 21.04.1999  
PERCENTAGE OF  
Class 10<sup>th</sup>- 6.2 CGPA  
Class 12<sup>th</sup>- 55%  
Graduation- 71.9%

### **AREAS OF INTEREST:**

Marketing

### **INTERNSHIPS:**

OYO Weddingz, Creative Merchants,  
Future Group, THREADS(Connecting Dots)



## **MANISHA RAWAT**

DOB: 17.07.1999  
PERCENTAGE OF  
Class 10<sup>th</sup>- 75%  
Class 12<sup>th</sup>- 73%  
Graduation- 83%

### **AREAS OF INTEREST:**

Marketing

### **INTERNSHIPS:**

First Ricoz Pvt. Ltd.

# MBA STUDENTS PROFILES



## **RUDRAKSH SHARMA**

DOB: 17.02.1998  
PERCENTAGE OF  
Class 10<sup>th</sup>- 6.8 CGPA  
Class 12<sup>th</sup>- 55%  
Graduation- 76%

### **AREAS OF INTEREST:**

Marketing

### **INTERNSHIPS:**

Park Inn by Radisson



## **TUSHAR SINGH**

DOB: 22.10.1999  
PERCENTAGE OF  
Class 10<sup>th</sup>- 62%  
Class 12<sup>th</sup>- 68%  
Graduation- 70%

### **AREAS OF INTEREST:**

Marketing

### **INTERNSHIPS:**

IB Marketing, Krishna Law House,  
iFortis



## **DIVYA KUMARI**

DOB: 31.03.1998  
PERCENTAGE OF  
Class 10<sup>th</sup>- 68.4%  
Class 12<sup>th</sup>- 63.4%  
Graduation- 64%

### **AREAS OF INTEREST:**

Marketing

### **INTERNSHIPS:**

Peacock Solar



## **KARTIK KASTURIA**

DOB: 27.05.1998  
PERCENTAGE OF  
Class 10<sup>th</sup>- 53%  
Class 12<sup>th</sup>- 66.8%  
Graduation- 72%

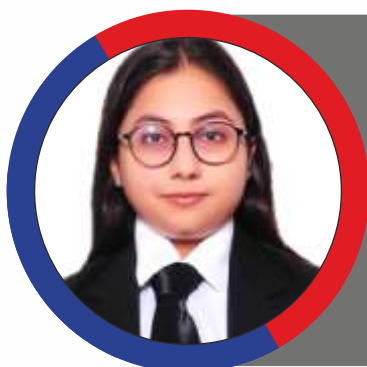
### **AREAS OF INTEREST:**

Marketing

### **INTERNSHIPS:**

Filatex India Ltd.

# MBA STUDENTS PROFILES



## **PALAK ARORA**

DOB: 09.01.1999  
PERCENTAGE OF  
Class 10<sup>th</sup>- 77.9%  
Class 12<sup>th</sup>- 78.4%  
Graduation- 59.85%

### **AREAS OF INTEREST:**

Marketing

### **INTERNSHIPS:**

Forever Secure



## **POOJA YADAV**

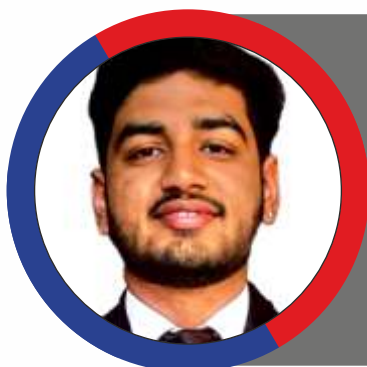
DOB: 11.11.1998  
PERCENTAGE OF  
Class 10<sup>th</sup>- 72.2%  
Class 12<sup>th</sup>- 66.4%  
Graduation- 82%

### **AREAS OF INTEREST:**

Marketing

### **INTERNSHIPS:**

CSA Advisor



## **PRASHANT GUPTA**

DOB: 01.12.1999  
PERCENTAGE OF  
Class 10<sup>th</sup>- 57%  
Class 12<sup>th</sup>- 70%  
Graduation- 54%

### **AREAS OF INTEREST:**

Marketing

### **INTERNSHIPS:**

iFortis Corporate  
IB Marketing



## **PRINCE**

DOB: 25.09.1996  
PERCENTAGE OF  
Class 10<sup>th</sup>- 6.4 CGPA  
Class 12<sup>th</sup>- 59%  
Graduation- 63%

### **AREAS OF INTEREST:**

Marketing

### **INTERNSHIPS:**

Peach Media

# MBA STUDENTS PROFILES



## MEGHA SEHWAT

DOB: 16.3.1999  
PERCENTAGE OF  
Class 10<sup>th</sup>- 68%  
Class 12<sup>th</sup>- 66%  
Graduation- 52%

### AREAS OF INTEREST:

Marketing

### INTERNSHIPS:

Creativates Pvt. Ltd.



## VIKASH GIRI

DOB: 04.02.1994  
PERCENTAGE OF  
Class 10<sup>th</sup>- 63.4%  
Class 12<sup>th</sup>-68.4%  
Graduation- 62.13%

### AREAS OF INTEREST:

Marketing

### INTERNSHIPS:

Visudh Ajivam Pvt. Ltd.,  
iFortis Worldwide



## MANSI SAINI

DOB: 02.02.1997  
PERCENTAGE OF  
Class 10<sup>th</sup>- 55%  
Class 12<sup>th</sup>- 64%  
Graduation- 70%

### AREAS OF INTEREST:

Marketing

### INTERNSHIPS:

Om Logistics, Addtitans Digital Pvt Ltd,  
Digiads Global, Picartzo



## MUSKAN ALAM

DOB: 22.12.2000  
PERCENTAGE OF  
Class 10<sup>th</sup>- 8.2 CGPA  
Class 12<sup>th</sup>- 60.2%  
Graduation- 83%

### AREAS OF INTEREST:

Marketing

### INTERNSHIPS:

Strega Modular Furniture Pvt. Ltd., Linguistic  
Insight OPC Pvt. Ltd, CSA Advisor, Strega  
Modular Furniture Pvt. Ltd.

# MBA STUDENTS PROFILES



## SHIV PRATAP SINGH

DOB: 13.07.1998  
PERCENTAGE OF  
Class 10<sup>th</sup> - 6.4 CGPA  
Class 12<sup>th</sup> - 68%  
Graduation- 64.5%

### AREAS OF INTEREST:

Marketing

### INTERNSHIPS:

Raletta Technology Pvt. Ltd.



## RIBEKA AGGARWAL

DOB: 18.09.2000  
PERCENTAGE OF  
Class 10<sup>th</sup> - 75%  
Class 12<sup>th</sup> - 57%  
Graduation- 82%

### AREAS OF INTEREST:

Marketing

### INTERNSHIPS:

Absstem Technologies,  
LPS Bossard Pvt. Ltd.



## SACHIN SHARMA

DOB: 02.05.1998  
PERCENTAGE OF  
Class 10<sup>th</sup> - 5.8 CGPA  
Class 12<sup>th</sup> - 55.6%  
Graduation- 79%

### AREAS OF INTEREST:

Marketing

### INTERNSHIPS:

Sharekhan Pvt. Ltd.



## SAJJAN THAKUR

DOB: 01.03.1999  
PERCENTAGE OF  
Class 10<sup>th</sup> - 64.6%  
Class 12<sup>th</sup> - 69.6%  
Graduation- 57%

### AREAS OF INTEREST:

Marketing

### INTERNSHIPS:

Kirae, Aashman Foundation,  
ifortis Worldwide, Visudh Ajivam



## YASHASVI KAUSHIK

DOB: 21.11.1998  
PERCENTAGE OF  
Class 10<sup>th</sup> - 6.2 CGPA  
Class 12<sup>th</sup> - 54.2%  
Graduation- 60.16%

### AREAS OF INTEREST:

Marketing

### INTERNSHIPS:

iFortis Corporate, IB Marketing

# BBA STUDENTS PROFILES



## ABHILASHA SHARMA

DOB: 22.04.2001  
PERCENTAGE OF  
Class 10<sup>th</sup> - 78%  
Class 12<sup>th</sup> - 75%

### INTERNSHIPS:

Times of India,  
UAS International



## AKANSHIT NARULA

DOB: 14.07.2001  
PERCENTAGE OF  
Class 10<sup>th</sup> - 80%  
Class 12<sup>th</sup> - 89.50%

### INTERNSHIPS:

Parmar Consultancy Service, The Leading Solutions, Unschool, Youth Empowerment Foundation



## ADESH KUMAR

DOB: 16.10.2001  
PERCENTAGE OF  
Class 10<sup>th</sup> - 81.70%  
Class 12<sup>th</sup> - 80.60%

### INTERNSHIPS:

The Leading Solutions



## AISHWARYA TIWARI

DOB: 27.03.2000  
PERCENTAGE OF  
Class 10<sup>th</sup> - 9.0 CGPA  
Class 12<sup>th</sup> - 63%

### INTERNSHIPS:

Kwality Walls

# BBA STUDENTS PROFILES



## **AKRITI**

DOB: 14.07.2001  
PERCENTAGE OF  
Class 10<sup>th</sup>- 66.50%  
Class 12<sup>th</sup>- 54%

### **INTERNSHIPS:**

Howe Robinson Shipping Pvt. Ltd.



## **ALOK CHAUDHARY**

DOB: 12.06.2001  
PERCENTAGE OF  
Class 10<sup>th</sup>- 70%  
Class 12<sup>th</sup>- 83%

### **INTERNSHIPS:**

Unschool, Insplore Consultants Pvt. Ltd.



## **ANCHAL AGGARWAL**

DOB: 06.04.2000  
PERCENTAGE OF  
Class 10<sup>th</sup>- 60%  
Class 12<sup>th</sup>- 65.75%

### **INTERNSHIPS:**

The Leading Solutions



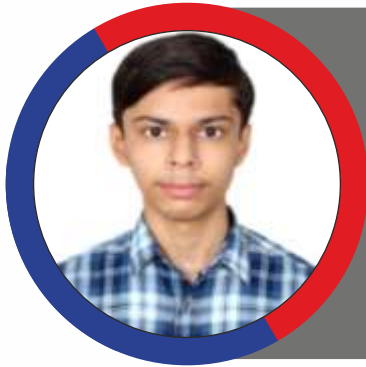
## **ANKUSH BHALLA**

DOB: 09.05.2000  
PERCENTAGE OF  
Class 10<sup>th</sup>- 6.4 CGPA  
Class 12<sup>th</sup>- 63%

### **INTERNSHIPS:**

Aashman Foundation

# BBA STUDENTS PROFILES



## **ANSHUM CHOPRA**

DOB: 14.03.2001  
PERCENTAGE OF  
Class 10<sup>th</sup>- 63%  
Class 12<sup>th</sup>- 60%

### **INTERNSHIPS:**

Aashman Foundation

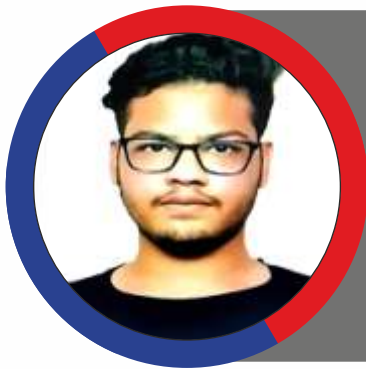


## **ANUSHKA BHARDWAJ**

DOB: 09.07.2001  
PERCENTAGE OF  
Class 10<sup>th</sup>- 6.4 CGPA  
Class 12<sup>th</sup>- 70%

### **INTERNSHIPS:**

Enfixes Solutions, Eleven Eyed  
Productions, INGLU Global



## **ASHISH GARG**

DOB: 17.04.2002  
PERCENTAGE OF  
Class 10<sup>th</sup>- 6.0 CGPA  
Class 12<sup>th</sup>- 69.80%

### **INTERNSHIPS:**

Megasoft Solutions India Pvt.Ltd



## **ASHITA VERMA**

DOB: 21.05.2001  
PERCENTAGE OF  
Class 10<sup>th</sup>- 6.2 CGPA  
Class 12<sup>th</sup>- 58.80%

### **INTERNSHIPS:**

Sharekhan Ltd.

# BBA STUDENTS PROFILES



## **BARUN KUMAR DUTTA**

DOB: 25.12.2000  
PERCENTAGE OF  
Class 10<sup>th</sup> - 9.4 CGPA  
Class 12<sup>th</sup> - 78%

### **INTERNSHIPS:**

Atechnos, Sharekhan Ltd.

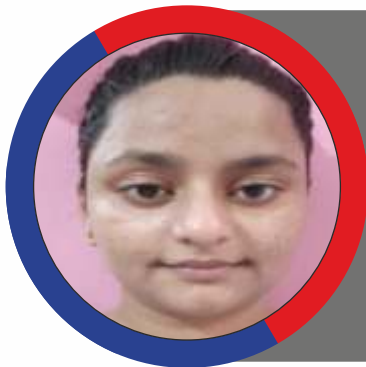


## **CHIRAG MAHAJAN**

DOB: 28.02.2001  
PERCENTAGE OF  
Class 10<sup>th</sup> - 6.8 CGPA  
Class 12<sup>th</sup> - 71%

### **INTERNSHIPS:**

Sharekhan Ltd.

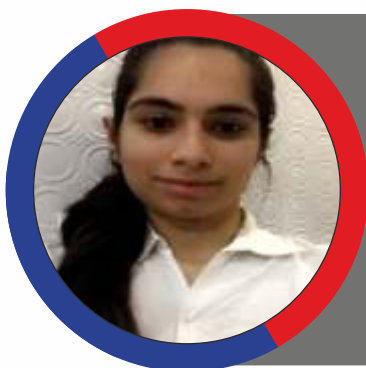


## **DIKSHA SINGH**

DOB: 15.08.2000  
PERCENTAGE OF  
Class 10<sup>th</sup> - 7.6 CGPA  
Class 12<sup>th</sup> - 72.04%

### **INTERNSHIPS:**

Indian Oil Corporation Ltd.



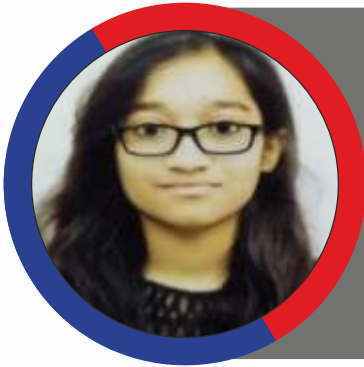
## **DIVYA JAI SINGHANIA**

DOB: 22.05.2001  
PERCENTAGE OF  
Class 10<sup>th</sup> - 7.0 CGPA  
Class 12<sup>th</sup> - 75%

### **INTERNSHIPS:**

Digital Vidya

# BBA STUDENTS PROFILES



## **ESHA SRIVASTAVA**

DOB: 13.11.2021  
PERCENTAGE OF  
Class 10<sup>th</sup>- 7.6 CGPA  
Class 12<sup>th</sup>- 88.50%

### **INTERNSHIPS:**

Community Influencer Intern Unschool,  
Jan Kalyan Multipurpose Educational  
Society, The Leading Solutions, Make  
My Trip Pvt. Ltd.



## **GRAMY JAIN**

DOB: 13.05.2001  
PERCENTAGE OF  
Class 10<sup>th</sup>- 8.6 CGPA  
Class 12<sup>th</sup>- 8.5 CGPA

### **INTERNSHIPS:**

Internshala,  
Insplore Consultants Pvt. Ltd.



## **GURMEET SINGH GUJRAL**

DOB: 02.05.2001  
PERCENTAGE OF  
Class 10<sup>th</sup>- 6.6 CGPA  
Class 12<sup>th</sup>- 74.50%

### **INTERNSHIPS:**

Garrud



## **HARSH MEHTA**

DOB: 11-10-2001  
PERCENTAGE OF  
Class 10<sup>th</sup>- 6.0 CGPA  
Class 12<sup>th</sup>- 60%

### **INTERNSHIPS:**

Times of India, Leading Solutions, LUDIFU

# BBA STUDENTS PROFILES

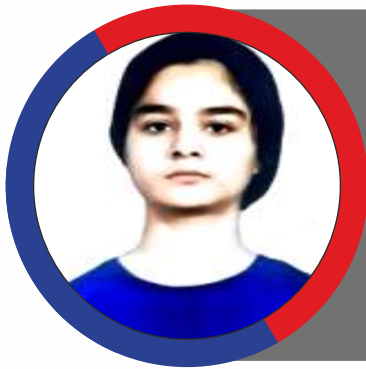


## **HARSHITA MONGA**

DOB: 30.04.2021  
PERCENTAGE OF  
Class 10<sup>th</sup>- 8.0 CGPA  
Class 12<sup>th</sup>- 80.76%

### **INTERNSHIPS:**

Unschool, Insplore



## **ISHA MEHRA**

DOB: 23.08.2000  
PERCENTAGE OF  
Class 10<sup>th</sup>- 7.0 CGPA  
Class 12<sup>th</sup>- 70%

### **INTERNSHIPS:**

Insplore Consultant Pvt Ltd



## **ISHAN SHARMA**

DOB: 29.06.2000  
PERCENTAGE OF  
Class 10<sup>th</sup>- 5.8 CGPA  
Class 12<sup>th</sup>- 50%

### **INTERNSHIPS:**

Times of India



## **ISHAN SHARMA**

DOB: 29.07.2001  
PERCENTAGE OF  
Class 10<sup>th</sup>- 68%  
Class 12<sup>th</sup>- 55%

### **INTERNSHIPS:**

Times of India

# BBA STUDENTS PROFILES

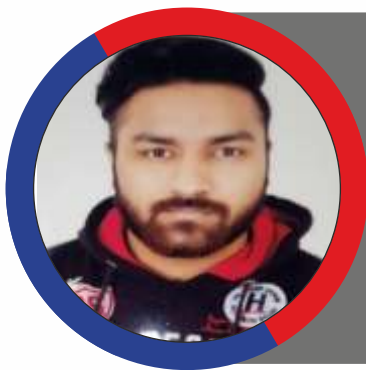


## ISHANT DHAWAN

DOB: 12.11.2000  
PERCENTAGE OF  
Class 10<sup>th</sup>- 7.6 CGPA  
Class 12<sup>th</sup>- 88.50%

### INTERNSHIPS:

Vibgyor Advicorp Pvt. Ltd.

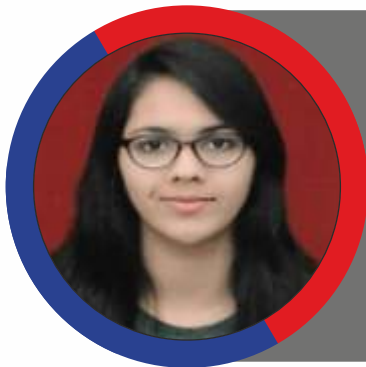


## ISHANT SINGH

DOB: 06.10.2000  
PERCENTAGE OF  
Class 10<sup>th</sup>- 7.0 CGPA  
Class 12<sup>th</sup>- 65%

### INTERNSHIPS:

Talent Phoenix Consulting



## ISHIKA KHANDELWAL

DOB: 01.01.2001  
PERCENTAGE OF  
Class 10<sup>th</sup>- 6.0 CGPA  
Class 12<sup>th</sup>- 53%

### INTERNSHIPS:

Caya International Company



## ISHIKA RANA

DOB: 12.10.2000  
PERCENTAGE OF  
Class 10<sup>th</sup>- 70.30%  
Class 12<sup>th</sup>- 82%

### INTERNSHIPS:

Sharekhan Ltd., Pagaria Foundation,  
Shavsi Global Services

# BBA STUDENTS PROFILES

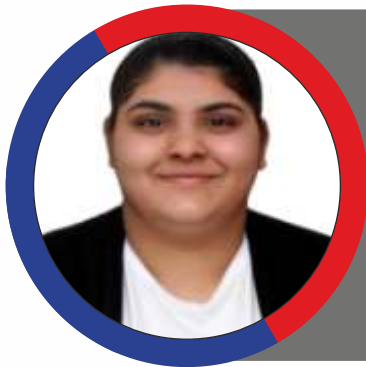


## **JATIN SHARMA**

DOB: 29.08.2001  
PERCENTAGE OF  
Class 10<sup>th</sup>- 6.2 CGPA  
Class 12<sup>th</sup>- 82%

### **INTERNSHIPS:**

Viral Fission, Sharekhan Ltd.

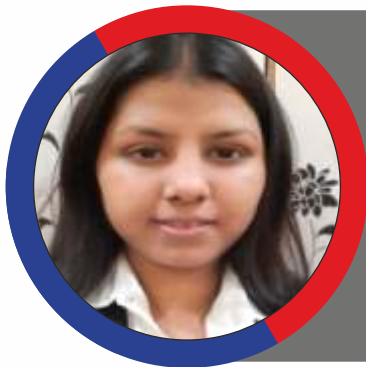


## **JHALAK SHARMA**

DOB: 25.10.2001  
PERCENTAGE OF  
Class 10<sup>th</sup>- 7.6 CGPA  
Class 12<sup>th</sup>- 70%

### **INTERNSHIPS:**

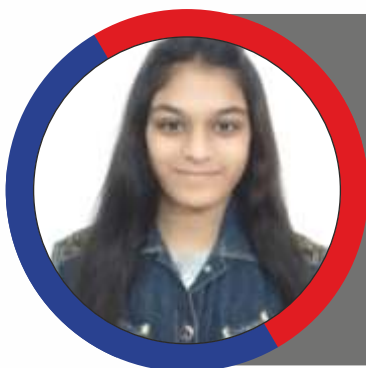
Insplore Consultants, Mzaalo



## **KALASH AGGARWAL**

DOB: 09.01.2001  
PERCENTAGE OF  
Class 10<sup>th</sup>- 6.0 CGPA  
Class 12<sup>th</sup>- 60%

### **INTERNSHIPS:**



## **KANIKA JAIN**

DOB: 14.11.2001  
PERCENTAGE OF  
Class 10<sup>th</sup>- 6.8 CGPA  
Class 12<sup>th</sup>- 74%

### **INTERNSHIPS:**

Insplore Consultant Pvt. Ltd.

# BBA STUDENTS PROFILES



## **KANZA KAZMI**

DOB: 15.08.2001  
PERCENTAGE OF  
Class 10<sup>th</sup>- 8.6 CGPA  
Class 12<sup>th</sup>- 81.50%

### **INTERNSHIPS:**

Sharekhan Ltd., Lexpeeps Pvt. Ltd.,  
iFortis Worldwide



## **KAPIL**

DOB: 21.07.2002  
PERCENTAGE OF  
Class 10<sup>th</sup>- 7.6 CGPA  
Class 12<sup>th</sup>- 64.25%

### **INTERNSHIPS:**

Bennett Coleman & Company,  
Shavsi Global Services



## **KARAN BOHRA**

DOB: 18.08.2002  
PERCENTAGE OF  
Class 10<sup>th</sup>- 60%  
Class 12<sup>th</sup>- 60%

### **INTERNSHIPS:**

LUDIFU, Viral Fission



## **KARTIK GUPTA**

DOB: 03.12.2001  
PERCENTAGE OF  
Class 10<sup>th</sup>- 8.8 CGPA  
Class 12<sup>th</sup>- 84.4%

### **INTERNSHIPS:**

Domino's Pizza

# BBA STUDENTS PROFILES

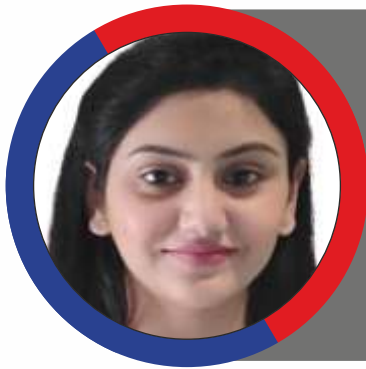


## **KOMAL DAHIYA**

DOB: 11.09.2001  
PERCENTAGE OF  
Class 10<sup>th</sup>- 7.6 CGPA  
Class 12<sup>th</sup>- 88.25%

### **INTERNSHIPS:**

Awign, Times of India

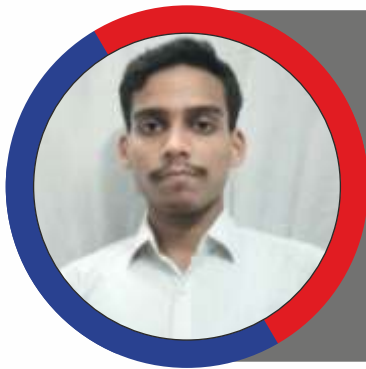


## **KRITIKA KHANNA**

DOB: 06.11.2001  
PERCENTAGE OF  
Class 10<sup>th</sup>- 7.2 CGPA  
Class 12<sup>th</sup>- 84.50%

### **INTERNSHIPS:**

Khanna Packers & Moulders



## **KUSHAGRA BANSAL**

DOB: 29.07.2000  
PERCENTAGE OF  
Class 10<sup>th</sup>- 9.2 CGPA  
Class 12<sup>th</sup>- 75%

### **INTERNSHIPS:**

Sharekhan Ltd.,  
Jankalyan Multipurpose Education Society



## **LAKSHYA VATS**

DOB: 02.02.2001  
PERCENTAGE OF  
Class 10<sup>th</sup>- 9.0 CGPA  
Class 12<sup>th</sup>- 68%

### **INTERNSHIPS:**

Times of India

# BBA STUDENTS PROFILES



## **LOVESH BHATIA**

DOB: 01.02.2001  
PERCENTAGE OF  
Class 10<sup>th</sup>- 6.0 CGPA  
Class 12<sup>th</sup>- 65%

### **INTERNSHIPS:**

Akashganga Infraventures India Ltd.

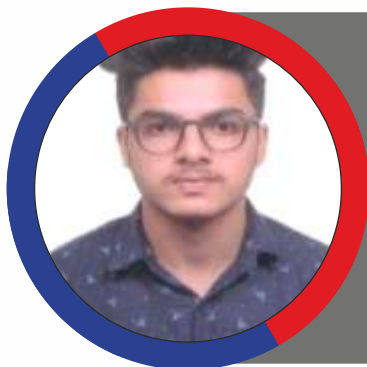


## **MANSI JAIN**

DOB: 17.12.2000  
PERCENTAGE OF  
Class 10<sup>th</sup>- 70%  
Class 12<sup>th</sup>- 75%

### **INTERNSHIPS:**

Lumevent Pvt Ltd,  
Insplore Consultant Pvt Ltd



## **MAYANK TANWAR**

DOB: 10.11.2001  
PERCENTAGE OF  
Class 10<sup>th</sup>- 6.6 CGPA  
Class 12<sup>th</sup>- 65%

### **INTERNSHIPS:**

PT (Professor Teaches) Live,  
Aashman Foundation



## **MEGHA GUPTA**

DOB: 24.07.2001  
PERCENTAGE OF  
Class 10<sup>th</sup>- 58%  
Class 12<sup>th</sup>- 63%

### **INTERNSHIPS:**

Sharekhan Ltd

# BBA STUDENTS PROFILES



## **MOHD ANSAB**

DOB: 14.08.2001  
PERCENTAGE OF  
Class 10<sup>th</sup>- 66%  
Class 12<sup>th</sup>- 65%

### **INTERNSHIPS:**

Vibgyor Advisors



## **MUSKAN ARORA**

DOB: 03.12.2001  
PERCENTAGE OF  
Class 10<sup>th</sup>- 76%  
Class 12<sup>th</sup>- 78%

### **INTERNSHIPS:**

The Global Institute of Hotel  
Management



## **MUSKAN SINDHWANI**

DOB: 02.03.2001  
PERCENTAGE OF  
Class 10<sup>th</sup>- 94%  
Class 12<sup>th</sup>- 84%

### **INTERNSHIPS:**

Courteous & Collaborous, Ashirvad Pipes  
Corporation, Times Of India



## **NAMAN THAPAR**

DOB: 23.12.2000  
PERCENTAGE OF  
Class 10<sup>th</sup>- 7.0 CGPA  
Class 12<sup>th</sup>- 60%

### **INTERNSHIPS:**

Viral Fission, LUDIFU, Paisabaazar.com

# BBA STUDENTS PROFILES



## **NITIN CHAUDHARY**

DOB: 04.06.2001  
PERCENTAGE OF  
Class 10<sup>th</sup>- 6.2 CGPA  
Class 12<sup>th</sup>- 75%

### **INTERNSHIPS:**

Voila Expert Pvt. Ltd

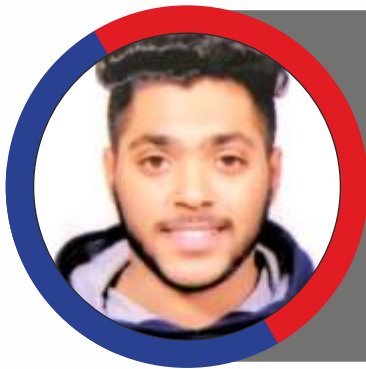


## **PALLAVI AHUJA**

DOB: 30.01.2001  
PERCENTAGE OF  
Class 10<sup>th</sup>- 52%  
Class 12<sup>th</sup>- 64%

### **INTERNSHIPS:**

Garrud, Industryowl



## **PARTH KATYAL**

DOB: 21.12.2000  
PERCENTAGE OF  
Class 10<sup>th</sup>- 70%  
Class 12<sup>th</sup>- 75%

### **INTERNSHIPS:**

Inception Wave



## **PRACHI GABA**

DOB: 24.07.2001  
PERCENTAGE OF  
Class 10<sup>th</sup>- 8.6 CGPA  
Class 12<sup>th</sup>- 80%

### **INTERNSHIPS:**

Enfield web

# BBA STUDENTS PROFILES



## **PRATHAM KAHOL**

DOB: 18.12.1998  
PERCENTAGE OF  
Class 10<sup>th</sup>- 67%  
Class 12<sup>th</sup>- 61%

### **INTERNSHIPS:**

Aashman Foundation



## **PRERNA**

DOB: 09.03.2002  
PERCENTAGE OF  
Class 10<sup>th</sup>- 72%  
Class 12<sup>th</sup>- 62%

### **INTERNSHIPS:**

Times of India



## **PRIYAL SHARMA**

DOB: 29.10.2001  
PERCENTAGE OF  
Class 10<sup>th</sup>- 7.8 CGPA  
Class 12<sup>th</sup>- 75%

### **INTERNSHIPS:**

Edumentor, Collegetips.in, Times of India,  
INGLU



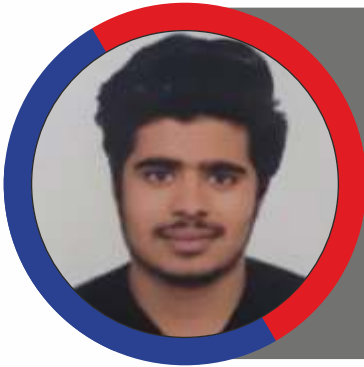
## **PRIYANKA GUPTA**

DOB: 02.05.2000  
PERCENTAGE OF  
Class 10<sup>th</sup>- 8.4 CGPA  
Class 12<sup>th</sup>- 60%

### **INTERNSHIPS:**

Zara

# BBA STUDENTS PROFILES



## **PRIYANSHU GULATI**

DOB: 21.08.2001  
PERCENTAGE OF  
Class 10<sup>th</sup>- 7.0 CGPA  
Class 12<sup>th</sup>- 76%

### **INTERNSHIPS:**

Sharekhan Ltd., Shine Projects,  
College Tips In.



## **PRIYANSHU KUMAR**

DOB: 15.08.1999  
PERCENTAGE OF  
Class 10<sup>th</sup>- 70%  
Class 12<sup>th</sup>- 72%

### **INTERNSHIPS:**

Times of India

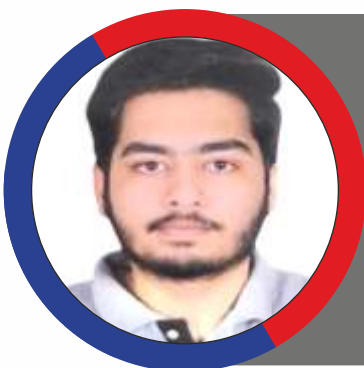


## **PULKIT DUGGAL**

DOB: 18.12.2000  
PERCENTAGE OF  
Class 10<sup>th</sup>- 7.0 CGPA  
Class 12<sup>th</sup>- 92%

### **INTERNSHIPS:**

Whitehatjr, Womenite,  
Altros Consultancy



## **RAGHAV PARASHAR**

DOB: 08.03.2000  
PERCENTAGE OF  
Class 10<sup>th</sup>- 6.6 CGPA  
Class 12<sup>th</sup>- 77.2%

### **INTERNSHIPS:**

Estorifi Pvt. Ltd.

# BBA STUDENTS PROFILES



## **RAHUL MITTAL**

DOB: 14.04.2001  
PERCENTAGE OF  
Class 10<sup>th</sup>- 80%  
Class 12<sup>th</sup>- 79%

### **INTERNSHIPS:**

Times of India, Sharekhan Ltd.



## **RAYYAN ALAM**

DOB: 03.04.2002  
PERCENTAGE OF  
Class 10<sup>th</sup>- 63%  
Class 12<sup>th</sup>- 71.60%

### **INTERNSHIPS:**

Jain Metal Traders



## **RITIKA GUPTA**

DOB: 10.05.2001  
PERCENTAGE OF  
Class 10<sup>th</sup>- 80%  
Class 12<sup>th</sup>- 60%

### **INTERNSHIPS:**

Times of India, Sharekhan Ltd., Garrud



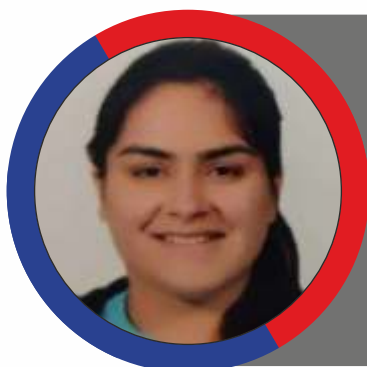
## **RIYA KHANNA**

DOB: 19.07.2001  
PERCENTAGE OF  
Class 10<sup>th</sup>- 9.0 CGPA  
Class 12<sup>th</sup>- 80%

### **INTERNSHIPS:**

Blitzjobs, Jankalyan Multipurpose Educational Society, Tutedude, Times of India

# BBA STUDENTS PROFILES

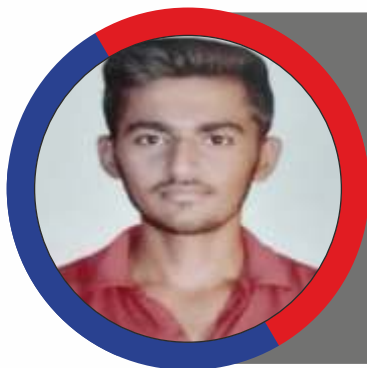


## **RIYA WADHWA**

DOB: 17.12.2000  
PERCENTAGE OF  
Class 10<sup>th</sup>- 9.2 CGPA  
Class 12<sup>th</sup>- 83.50%

### **INTERNSHIPS:**

Inception Wave



## **ROHIT**

DOB: 28.08.2001  
PERCENTAGE OF  
Class 10<sup>th</sup>- 79%  
Class 12<sup>th</sup>- 84.5%

### **INTERNSHIPS:**

The Leading Solutions

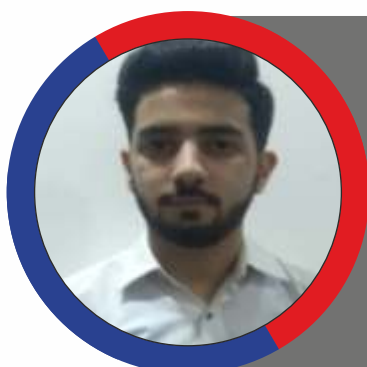


## **SACCHI GOEL**

DOB: 20.03.2001  
PERCENTAGE OF  
Class 10<sup>th</sup>- 72.20%  
Class 12<sup>th</sup>- 86.50%

### **INTERNSHIPS:**

The Leading Solutions,  
The Entrepreneurship Network



## **SAMARTH BHAGAT**

DOB: 04.12.2000  
PERCENTAGE OF  
Class 10<sup>th</sup>- 7.8 CGPA  
Class 12<sup>th</sup>- 60%

### **INTERNSHIPS:**

Insplore Company

# BBA STUDENTS PROFILES



## SANCHIT JAIN

DOB: 07.06.2001  
PERCENTAGE OF  
Class 10<sup>th</sup> - 9.2 CGPA  
Class 12<sup>th</sup> - 9.4 CGP

### INTERNSHIPS:

PTE Universe, Shelax Universe, Ashivad  
Pipes Corporation



## SANCHIT RAINA

DOB: 27.08.2000  
PERCENTAGE OF  
Class 10<sup>th</sup> - 64%  
Class 12<sup>th</sup> - 83%

### INTERNSHIPS:

INGLU Global



## SANYA VERMA

DOB: 15.04.2001  
PERCENTAGE OF  
Class 10<sup>th</sup> - 7.4 CGPA  
Class 12<sup>th</sup> - 62%

### INTERNSHIPS:

Viral Fission, Ashman Foundation



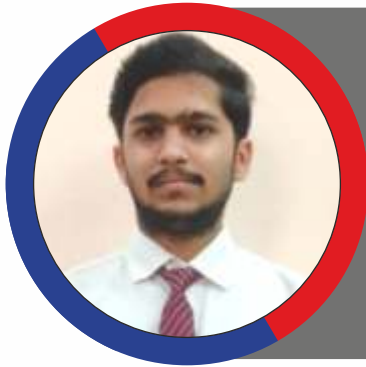
## SARTHAK SACHDEVA

DOB: 17.01.2002  
PERCENTAGE OF  
Class 10<sup>th</sup> - 58%  
Class 12<sup>th</sup> - 63.50%

### INTERNSHIPS:

Bloombuzz

# BBA STUDENTS PROFILES



## **SATWIK MITTAL**

DOB: 09.06.2002  
PERCENTAGE OF  
Class 10<sup>th</sup>- 6.8 CGPA  
Class 12<sup>th</sup>- 57.30%

### **INTERNSHIPS:**

Houseltt, Sharekhan Ltd.



## **SAYYED ARYAN**

DOB: 11.12.2000  
PERCENTAGE OF  
Class 10<sup>th</sup>- 65%  
Class 12<sup>th</sup>- 64.75%

### **INTERNSHIPS:**

Jubliant Food Works



## **SEBASTIAN GEORGE PHILIP**

DOB: 27.05.2001  
PERCENTAGE OF  
Class 10<sup>th</sup>- 68%  
Class 12<sup>th</sup>- 80%

### **INTERNSHIPS:**

Edumentor Educational Services Pvt Ltd



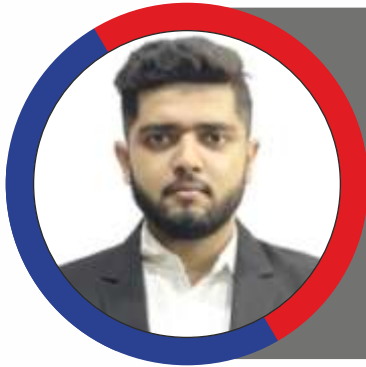
## **SHAILLY GARG**

DOB: 02.06.2001  
PERCENTAGE OF  
Class 10<sup>th</sup>- 8.8 CGPA  
Class 12<sup>th</sup>- 80%

### **INTERNSHIPS:**

iFortis

# BBA STUDENTS PROFILES



## SHIVAM SETIA

DOB: 19.07.2001  
PERCENTAGE OF  
Class 10<sup>th</sup>- 64%  
Class 12<sup>th</sup>- 80.50%

### INTERNSHIPS:

Times of India



## SHREYA AGGARWAL

DOB: 25.04.2001  
PERCENTAGE OF  
Class 10<sup>th</sup>- 83.60%  
Class 12<sup>th</sup>- 80.00%

### INTERNSHIPS:

Internyou



## SHRUTI JAIN

DOB: 15.05.2001  
PERCENTAGE OF  
Class 10<sup>th</sup>- 8.0 CGPA  
Class 12<sup>th</sup>- 59.00%

### INTERNSHIPS:

Times of India, Sharekhan Ltd.,  
House ITT



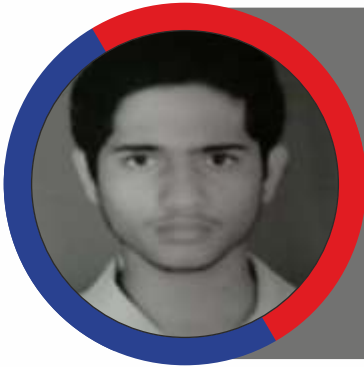
## SHRUTI KEJRIWAL

DOB: 08.05.2001  
PERCENTAGE OF  
Class 10<sup>th</sup>- 7.8 CGPA  
Class 12<sup>th</sup>- 55.00%

### INTERNSHIPS:

Adversify Marketing Pvt. Ltd.

# BBA STUDENTS PROFILES



## SHUBHAM

DOB: 14.06.2000  
PERCENTAGE OF  
Class 10<sup>th</sup> - 7.6 CGPA  
Class 12<sup>th</sup> - 73.00%

### INTERNSHIPS:



## SHUBHANGI GULATI

DOB: 11.07.2001  
PERCENTAGE OF  
Class 10<sup>th</sup> - 7.2 CGPA  
Class 12<sup>th</sup> - 76%

### INTERNSHIPS:

Peacock Solar, Aashman Foundation,  
INGLU Global



## SIDDHI SHARMA

DOB: 30.09.2001  
PERCENTAGE OF  
Class 10<sup>th</sup> - 9 CGPA  
Class 12<sup>th</sup> - 78%

### INTERNSHIPS:

IB Marketing, Aashmaan Foundation,  
Digifuse



## SUNNY GUPTA

DOB: 24.04.2001  
PERCENTAGE OF  
Class 10<sup>th</sup> - 8.2 CGPA  
Class 12<sup>th</sup> - 75%

### INTERNSHIPS:

HariVatika, International MUN,  
iFortis Corporate

# BBA STUDENTS PROFILES

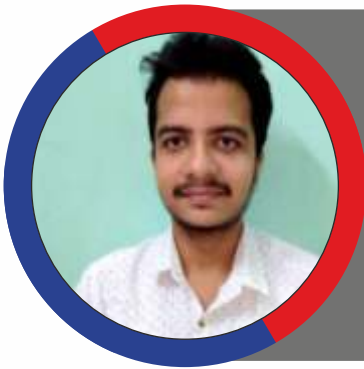


## **TULSI KHATRA**

DOB: 08.09.2000  
PERCENTAGE OF  
Class 10<sup>th</sup>- 6.6 CGPA  
Class 12<sup>th</sup>- 76.00%

### **INTERNSHIPS:**

The Leading Solutions, Times of India

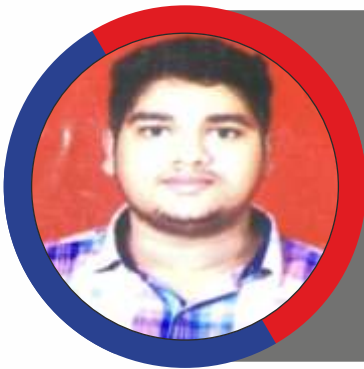


## **UMANG**

DOB: 26.07.2000  
PERCENTAGE OF  
Class 10<sup>th</sup>- 81.00%  
Class 12<sup>th</sup>- 74%

### **INTERNSHIPS:**

Digifuse

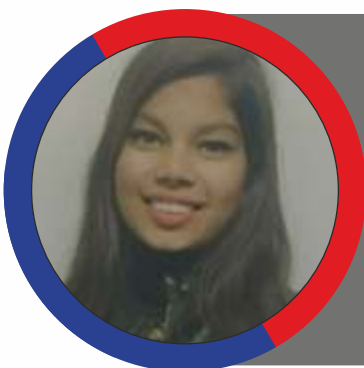


## **VANSH BANSAL**

DOB: 24.01.2001  
PERCENTAGE OF  
Class 10<sup>th</sup>- 7.2 CGPA  
Class 12<sup>th</sup>- 68.50%

### **INTERNSHIPS:**

Aashmaan Foundation, MBA TREK



## **VANSHIKA**

DOB: 28.12.2001  
PERCENTAGE OF  
Class 10<sup>th</sup>- 9.2 CGPA  
Class 12<sup>th</sup>- 81%

### **INTERNSHIPS:**

Insplore Consultants, Climber Knowledge,  
Career Pvt. Ltd., TCS

# BBA STUDENTS PROFILES

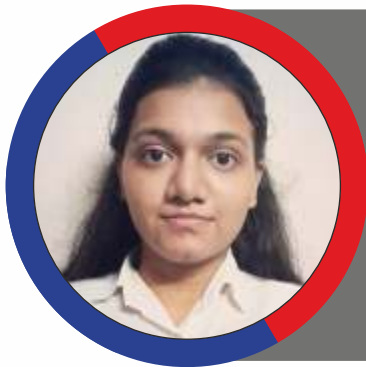


## VANSHIKA TALWAR

DOB: 26.07.2000  
PERCENTAGE OF  
Class 10<sup>th</sup>- 6.4 CGPA  
Class 12<sup>th</sup>- 72%

### INTERNSHIPS:

Aashman Foundation



## VIBHA AGARWAL

DOB: 21.06.2001  
PERCENTAGE OF  
Class 10<sup>th</sup>- 8.2 CGPA  
Class 12<sup>th</sup>- 58%

### INTERNSHIPS:

Sharekhan Ltd.

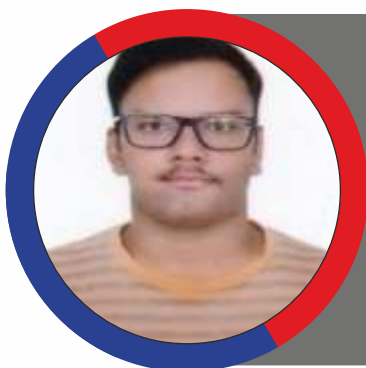


## VIKAS AGGARWAL

DOB: 23.12.1999  
PERCENTAGE OF  
Class 10<sup>th</sup>- 7.8 CGPA  
Class 12<sup>th</sup>- 63%

### INTERNSHIPS:

Proof of Performance Pvt. Ltd.



## VIPUL GOYAL

DOB: 27.09.2001  
PERCENTAGE OF  
Class 10<sup>th</sup>- 5.4 CGPA  
Class 12<sup>th</sup>- 62%.

### INTERNSHIPS:

Shree Mahesh Heritage,  
Mzzalo

# BBA STUDENTS PROFILES



## VIPUL YADAV

DOB: 21.02.2002  
PERCENTAGE OF  
Class 10<sup>th</sup> - 8.0 CGPA  
Class 12<sup>th</sup> - 73%

### INTERNSHIPS:

Idea Usher, Orbit Tele Systems



## VRISHTI MAGGO

DOB: 03.11.2001  
PERCENTAGE OF  
Class 10<sup>th</sup> - 7.8 CGPA  
Class 12<sup>th</sup> - 70%

### INTERNSHIPS:

Kotak Mahindra Life Insurance



## YATHARTH SHARMA

DOB: 06.06.2001  
PERCENTAGE OF  
Class 10<sup>th</sup> - 78%  
Class 12<sup>th</sup> - 83.25%

### INTERNSHIPS:

Sharekhan Ltd.

## Placement Assistance Team (PAT)



Top Row (L to R) Arun Ahuja , Disha Sharma, Ayush Nautiyal  
Below Row (L to R) Himanshi Bathla, Muskan Alam

## Faculty Coordinator



**Dr. Swati Srivastava**

**Asst. Professor cum Training &  
Corporate Relationship Manager**

# Industry Institute Placement Cell (IIPC)

The Industry Institute Placement Cell (IIPC) at GIBS endeavours to provide internship opportunities across all batches and placement to final year students in the field of management. The aspirants are placed with the best corporates for internship and for post placement offers. IIPC is the only authorized body to formally approach and communicate with the recruiters in relation to any recruitment/internship process. It is the responsibility of this Cell to keep the students informed about best offers which benefit them in their areas of interest. However the students are free to approach any company for internship/placement duly informing the IIPC. Various grooming activities and career counselling sessions along with the training sessions are conducted regularly for their overall professional development. The Cell is headed by a faculty member supervising student volunteers who work enthusiastically throughout the year under their guidance for networking and relationship building with prospective employers. The Cell provides assistance to not only those who aspires to be recruited by corporates but also to those who wish to establish their own venture by providing them necessary guidance.

# General Guidelines by IIPC



1. The role of IIPC (Industry Institute Partnership Cell) is of a facilitator for internship & placement related activities. IIPC does not guarantee a job.
2. The Cell shall endeavor to secure placements for the final year students of management, through arrangement of placement interviews, campus recruitments and direct recruitments and internships across all batches.
3. The Placement facility is available to all the students registered with IIPC through the policy 'one job to one student at the first instance'. This will ensure that every student will get equal job opportunities and only few students do not consume up all the jobs.
4. It is the responsibility of this Cell to keep the students informed about best offers which benefit them in their areas of interest through emails, messages and placement channel on MS-Teams.
5. IIPC is the only authorized body to formally approach and communicate with the recruiters in relation to any internship/recruitment process.
6. However, the students are free to approach any company for internship/ placements duly informing the IIPC.
7. In case any student still remains unplaced after appearing for 13 companies offered by IIPC, further opportunities will be given only after other students are successfully placed.
8. Once a placement offer has been made to a candidate, he/she will be deemed to be placed. So that will lead to automatic withdrawal from the campus recruitment process.
9. Students cannot drop out from selection process once he/she has been shortlisted. A disciplinary action will be taken against defaulter students.



# giBS

Gitarattan International Business School

Grade 'A' Accredited by NAAC

+91-11-27555607/08 /09 : **PHONE**

placement@gitarattan.edu.in : **MAIL**

www.gitarattan.edu.in : **WEB**

